

Ideal Clima Midilogica Boilers

A range of eight highly efficient type approved boilers ranging in output from 82kw to 220kw suitable for use on oil, natural or L.P. gas.

Technical Features

The boiler casings are made from hot painted steel and are assembled by means of a unique clip on system which uses a minimum number of screws and bolts. The inner cast boiler body is highly efficient and the sections are assembled on two steel guide rails and finally secured by the tie rod system.

The main features of the boiler design are extremely high efficiency with extremely low nitrogen oxide emissions.

Flueway Access Door and Burner Door

These cast iron doors are hinged and can be installed for left or right hand opening.

Both doors are insulated with compressed ceramic fibre.

Casing Insulation

The boiler body is insulated by a 80mm thick mineral wool blanket.

Boiler Control Panel

The following are housed within the boiler control panel

- 1 Illuminated on/off switch
- 2 Control thermostat
- 3 Manual reset limit thermostat
- 4 Thermometer

The panel is wired to easily accommodate single and two stage burners and complies with the 73/23/EC directive on low voltage.

Packages

The boiler body, gaskets, tie rods, assembly guides, accessories and control panels are delivered on a pallet.

The boiler casing and jacket insulation are packed in a separate box along with the boiler instructions.

Burner

The boiler is suitable for use with any oil or blown gas burner which is CE approved.



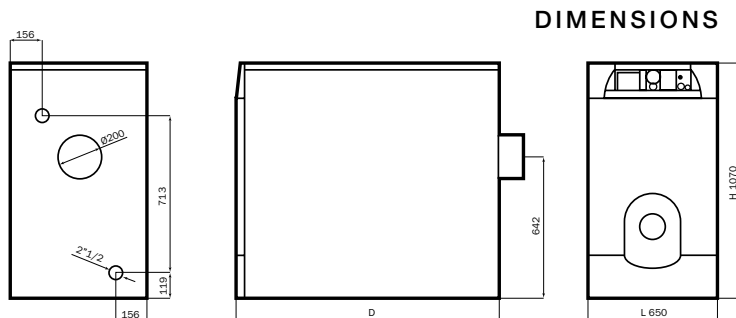
- 1 Close-up of Control Panel
- 2 Boiler Body.
- 3 Cast Iron middle section.
- 4 Hinged door assemblies.



- 5 Cast iron turbo fan to optimize efficiency.
- 6 Easy cleaning thanks to the hinged door.



Technical Data



TYPE	L mm	H mm	D mm	Ø Nominal bore	
				Flow	Return
Midilogica 6	650	1070	885	2"1/2	2"1/2
Midilogica 7	650	1070	1007	2"1/2	2"1/2
Midilogica 8	650	1070	1129	2"1/2	2"1/2
Midilogica 9	650	1070	1251	2"1/2	2"1/2
Midilogica 10	650	1070	1373	2"1/2	2"1/2
Midilogica 11	650	1070	1495	2"1/2	2"1/2
Midilogica 12	650	1070	1617	2"1/2	2"1/2
Midilogica 13	650	1070	1739	2"1/2	2"1/2

Model		MIDILOGICA 6	MIDILOGICA 7	MIDILOGICA 8	MIDILOGICA 9	MIDILOGICA 10	MIDILOGICA 11	MIDILOGICA 12	MIDILOGICA 13
Input	kW	90	107.4	124.8	144.3	163.6	196	217.6	239.1
Output	kW	82	98	114	132	150	180	200	220
Useful efficiency at 100%PN	%	91.1	91.2	91.4	91.6	91.7	91.8	91.9	92
at 30%PN	%	92.9	92.9	92.8	92.8	92.7	92.7	92.6	92.6
Stack loss PN with burner switched on	%	7.5	7.4	7.2	7.2	7	7	7	6.9
with burner switched off	%	0.1	0.1	0.1	0.1	0.1	0.1	0.1	0.1
Jacket loss	%	1.3	1.3	1.3	1.2	1.2	1.2	1.1	1.1
Combustion chamber volume	dm ²	64.5	77.2	90	102.8	115.6	128.4	141.2	154
Flue gas temperature	°C	180	179	177	175	174.8	171	175	174
CO ₂	%	9.6	9.6	9.8	9.9	10.3	10.4	10.7	10.8
Power supply	230 V - 50 Hz - Max 6 A								
Water content	l	71.7	82.3	92.9	103.5	114.1	124.7	135.3	145.9
Working pressure	bar	5	5	5	5	5	5	5	5
Dry weight	kg	340	383	425	467	510	553	596	639

EUROTECH COMBUSTIONS



PARKSIDE ROAD
KENDAL
CUMBRIA
LA9 7DU

TEL: (01539) 722936
FAX: (01539) 733734