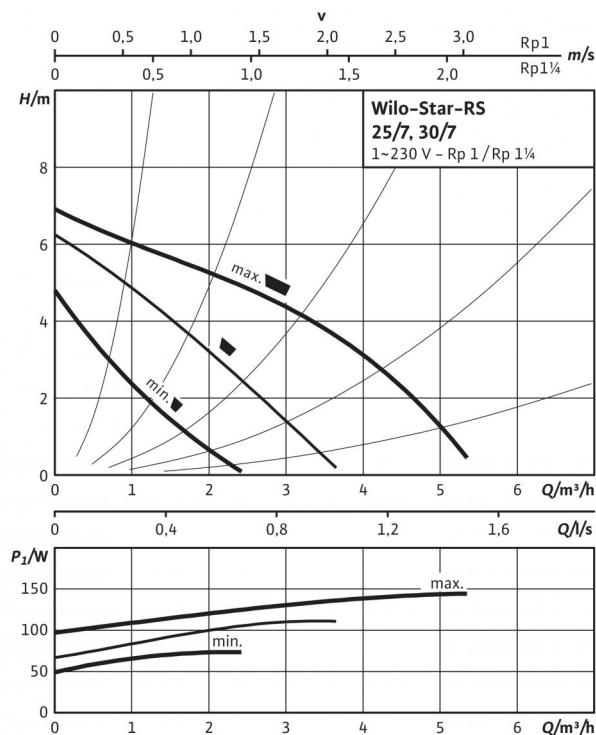
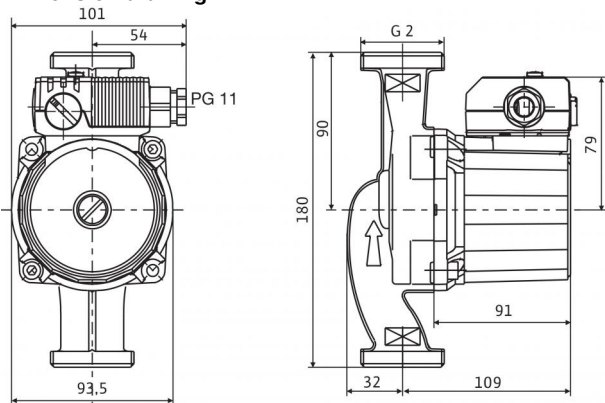


Data sheet: Star-RS 30/7

Pump curves

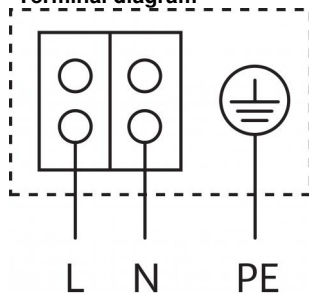


Dimension drawing



Motor horizontal
Terminal box positions for 3, 6, 9 and 12 o'clock possible

Terminal diagram



Blocking current-proof motor
Single-phase motor (EM) 2-pole - 1~230 V, 50 Hz
With built-in capacitor

Approved fluids (other fluids on request)

Heating water (in accordance with VDI 2035)
Water-glycol mixtures (max. 1:1; above 20% admixture, the pumping data must be checked)

Permitted field of application

Temperature range at max. ambient temperature +40 °C
Maximum permissible operating pressure P_{max}

Pipe connections

Threaded pipe union
Thread
Overall length L_0

Motor/electronics

Electromagnetic compatibility

Emitted interference

Interference resistance

Speed control

Protection class

Insulation class

Mains connection

Speed n

Power consumption P_1

Current consumption I

Motor protection

Threaded cable connection PG

•
•

-10...+110 °C
10 bar

Rp 1¼
G 2
180 mm

EN 61800-3
EN 61000-6-3
EN 61000-6-2
-
IP 44
F
1~230 V, 50 Hz
2300 / 2650 / 2800 rpm
68 / 95 / 132 W
0.30 / 0.42 / 0.58 A
Not required (blocking-current proof)
1x11

Materials

Pump housing

Impeller

Pump shaft

Bearing

Grey cast iron
Fibreglass-reinforced PP
Stainless steel (X40Cr13)
Carbon, metal impregnated

Minimum suction head at suction port for avoiding cavitation at water pumping

Temperature
Minimum suction head at 50 / 95 / 110 °C

0.5 / 3 / 10 m

Information for order placements

Make

Art no.

Type

Weight approx. m

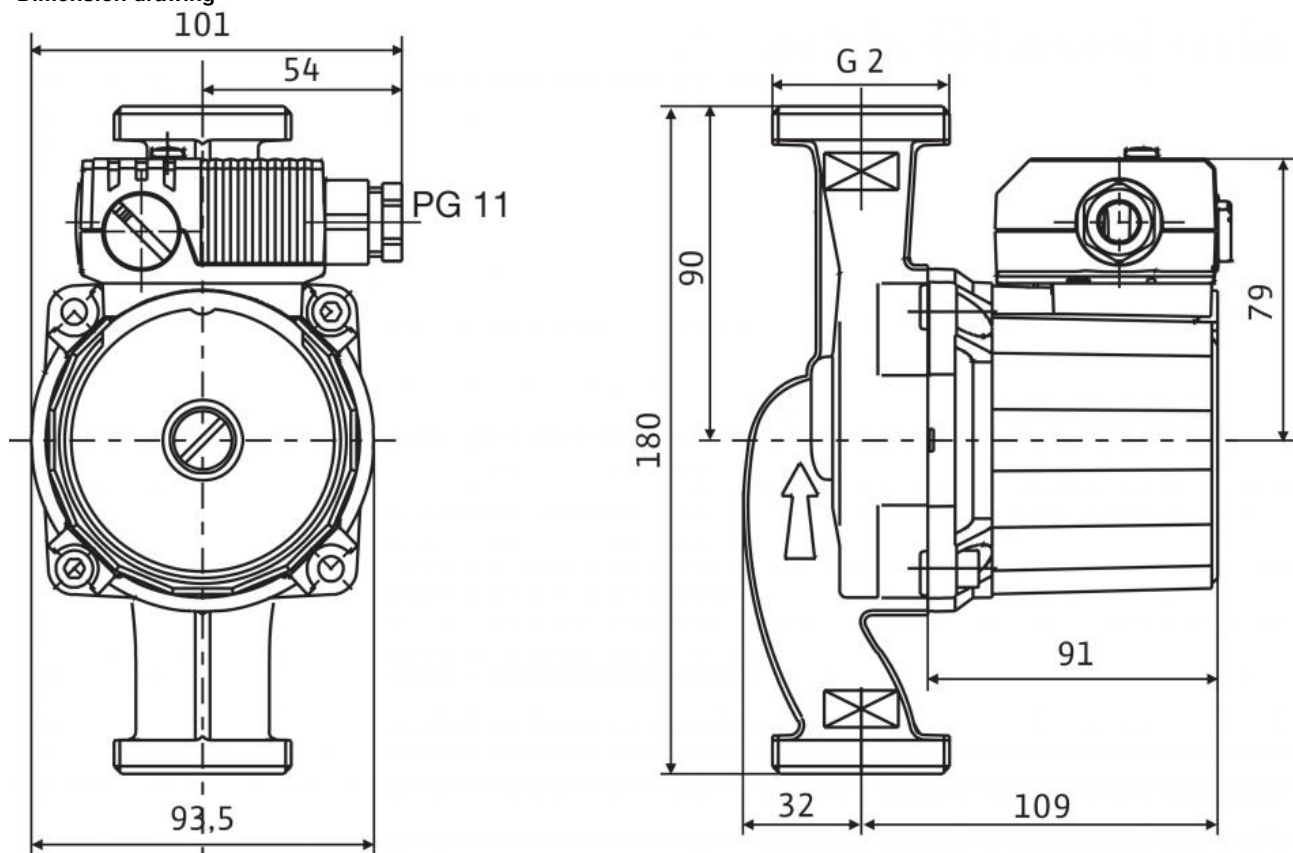
Wilo
4037311
Star-RS 30/7
3 kg

Version ...RG with pump housing made of red brass

Version ...L with connection for quick aspirator

Dimensions and dimensions drawings: Star-RS 30/7

Dimension drawing



Motor horizontal
Terminal box positions for 3, 6, 9 and 12 o'clock possible

Pump curves: Star-RS 30/7

Pump curves

