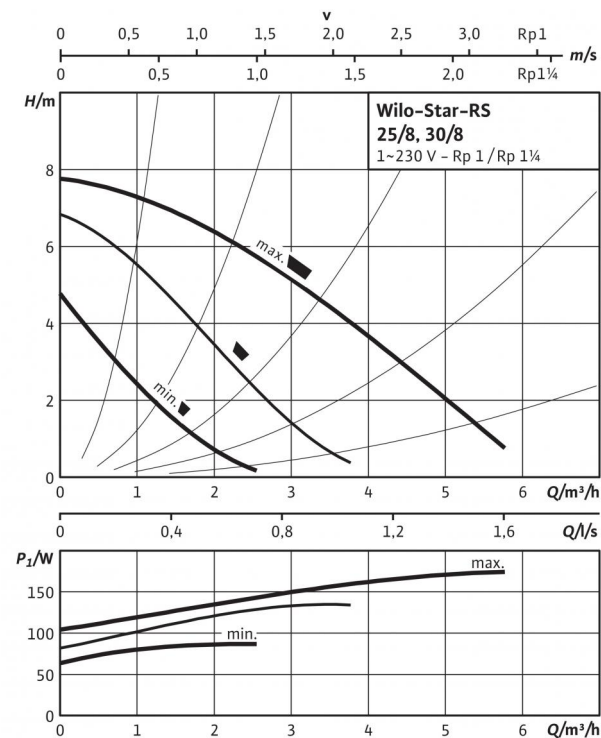
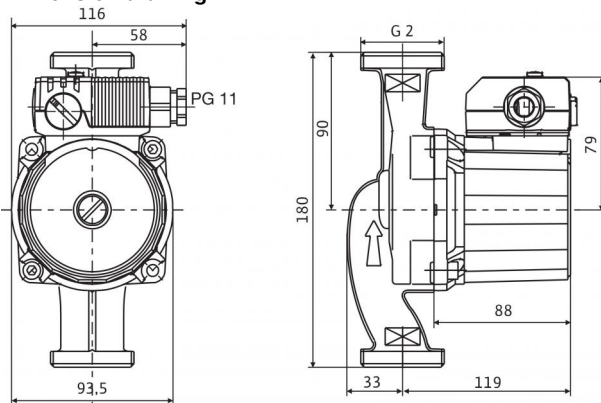


## Data sheet: Star-RS 30/8

### Pump curves

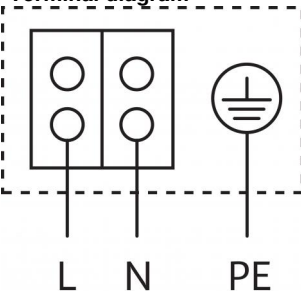


### Dimension drawing



Motor horizontal  
Terminal box positions for 3, 6, 9 and 12 o'clock possible

### Terminal diagram



Blocking current-proof motor  
Single-phase motor (EM) 2-pole - 1~230 V, 50 Hz  
With built-in capacitor

### Approved fluids (other fluids on request)

Heating water (in accordance with VDI 2035)  
Water-glycol mixtures (max. 1:1; above 20% admixture, the pumping data must be checked)

### Permitted field of application

Temperature range at max. ambient temperature +40 °C  
Maximum permissible operating pressure  $P_{max}$

### Pipe connections

Threaded pipe union  
Thread  
Overall length  $L_0$

### Motor/electronics

Electromagnetic compatibility  
Emitted interference  
Interference resistance  
Speed control  
Protection class  
Insulation class  
Mains connection  
Speed  $n$   
Power consumption  $P_1$   
Current consumption  $I$   
Motor protection  
Threaded cable connection  $PG$

•  
•

-10...+110 °C  
10 bar

Rp 1¼  
G 2  
180 mm

EN 61800-3  
EN 61000-6-3  
EN 61000-6-2  
-  
IP 44  
F  
1~230 V, 50 Hz  
2122 / 2404 / 2760 rpm  
81 / 113 / 151 W  
0.40 / 0.60 / 0.76 A  
Not required (blocking-current proof)  
1x11

### Materials

Pump housing  
Impeller  
Pump shaft  
Bearing

Grey cast iron  
Fibreglass-reinforced PP  
Stainless steel (X40Cr13)  
Carbon, metal impregnated

### Minimum suction head at suction port for avoiding cavitation at water pumping

Temperature  
Minimum suction head at 50 / 95 / 110 °C

0.5 / 3 / 10 m

### Information for order placements

Make  
Art no.  
Type  
Weight approx.  $m$

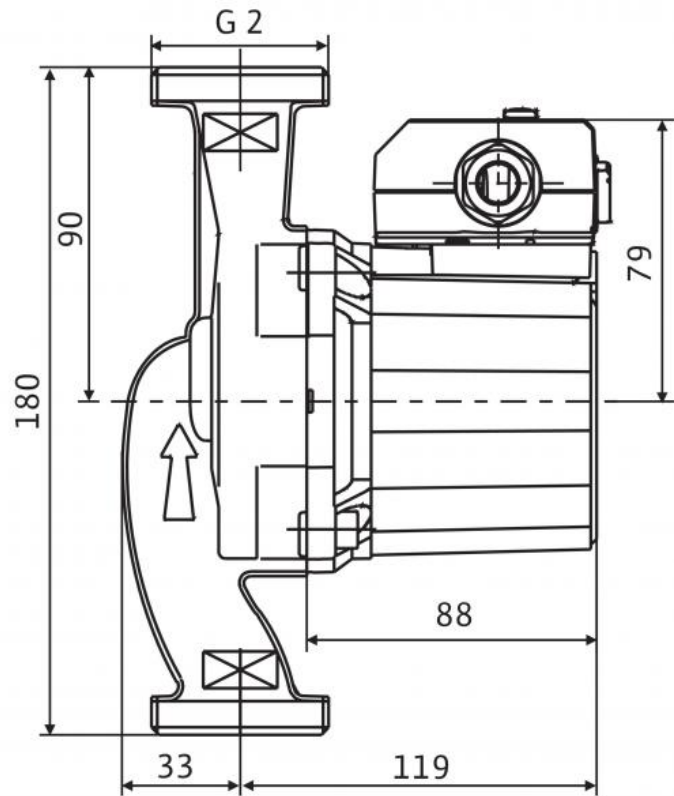
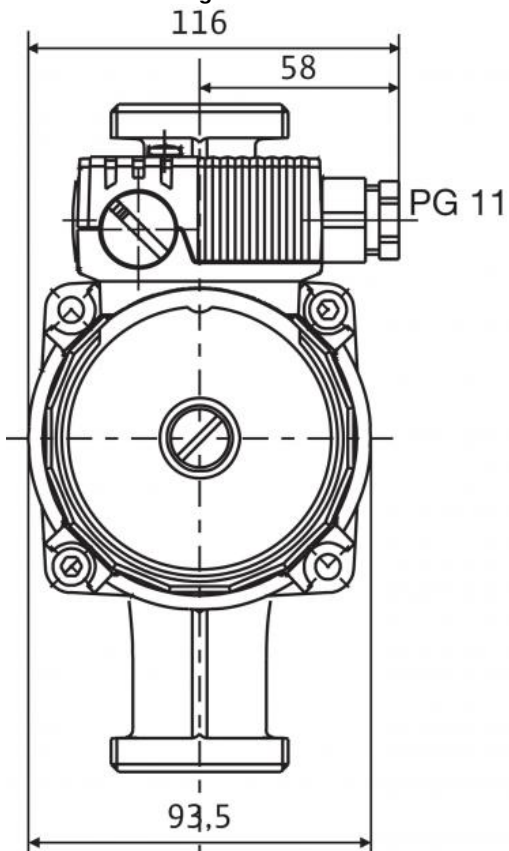
Wilo  
4094375  
Star-RS 30/8  
3.74 kg

Version ...RG with pump housing made of red brass

Version ...L with connection for quick aspirator

## Dimensions and dimensions drawings: Star-RS 30/8

Dimension drawing



Motor horizontal  
Terminal box positions for 3, 6, 9 and 12 o'clock possible

## Pump curves: Star-RS 30/8

Pump curves

