

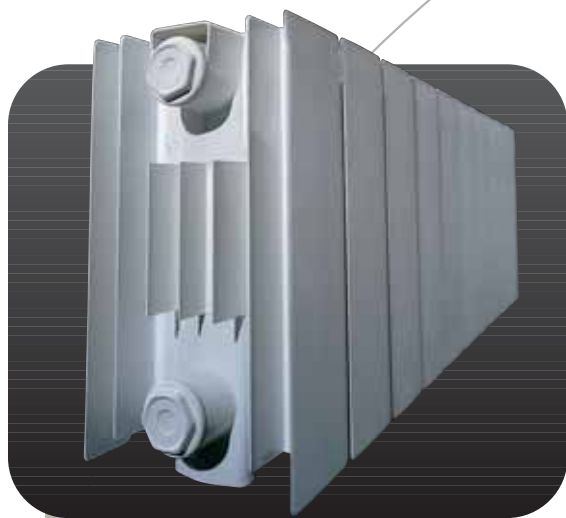
ASTERIE 200

ragall



grupporagaini

THE FUTURE WE ARE IN



ASTERIE 200

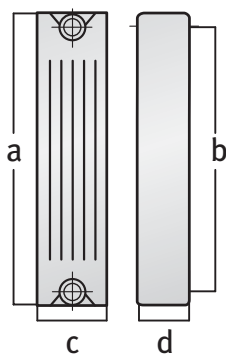


SMALL FOR LARGE RESULTS

Small and compact: these are the features of **Astérie 200**, a radiator that solves any problems relating to space, adapting perfectly to various types of environment.

Thanks to its special fixing systems, it can be installed directly on the walls, or positioned in places where there is glass, partition walls and mobile dividers, with special floor brackets.

Of a versatile nature, it harmonises completely with the architectonic structures, completing the furnishing with minimum space intrusion.



Technical Specifications

	Height mm (a)	Centres mm (b)	Depth mm (c)	Width mm (d)	Water capacity litres/elem.	Unloaded Weight Kg/elem.
ASTERIE 200	273	200	148	80	0,26	1,12

Characteristic Equation: $\phi = K_m \Delta t^n$. Thermal power values measured at the Milan Polytechnic in accordance with the EN442 norm. In order for the radiator to function correctly, it is recommended that you use an automatic valve with an air vent and that you never isolate the battery from the installation by closing its valves. Also remember that the guarantee is valid as long as the installations working pressure does not exceed 6 bar. Maximum working temperature: 120°. Hub Ø: 1". Radiators are guaranteed 10 years on painting.

Thermal power for element

$\Delta T = 50^\circ \text{C}$ EN442		Exponent n.	Coefficient K_m
KCal/h	Watt		
65	76	1,2586	0,5537



ragall
tradition and innovation

Ragall spa
Via Buffolareccia, 19/21 - 60025 Loreto (An) Italia
tel. +39 0717500284 r.a. - fax +39 071977045
www.ragall.com - info@ragall.com
www.grupporagallini.com