

FIAT CABRIOLETS 1500S AND 1200





FIAT 1500 S cabriolet

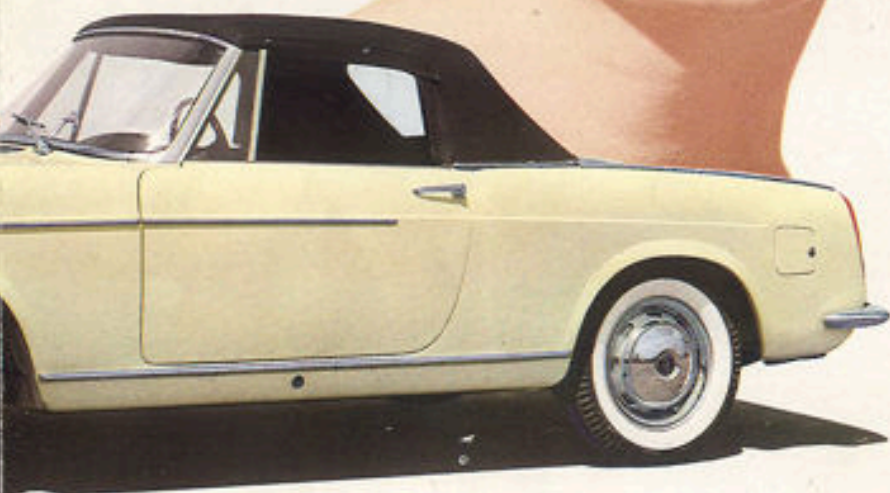
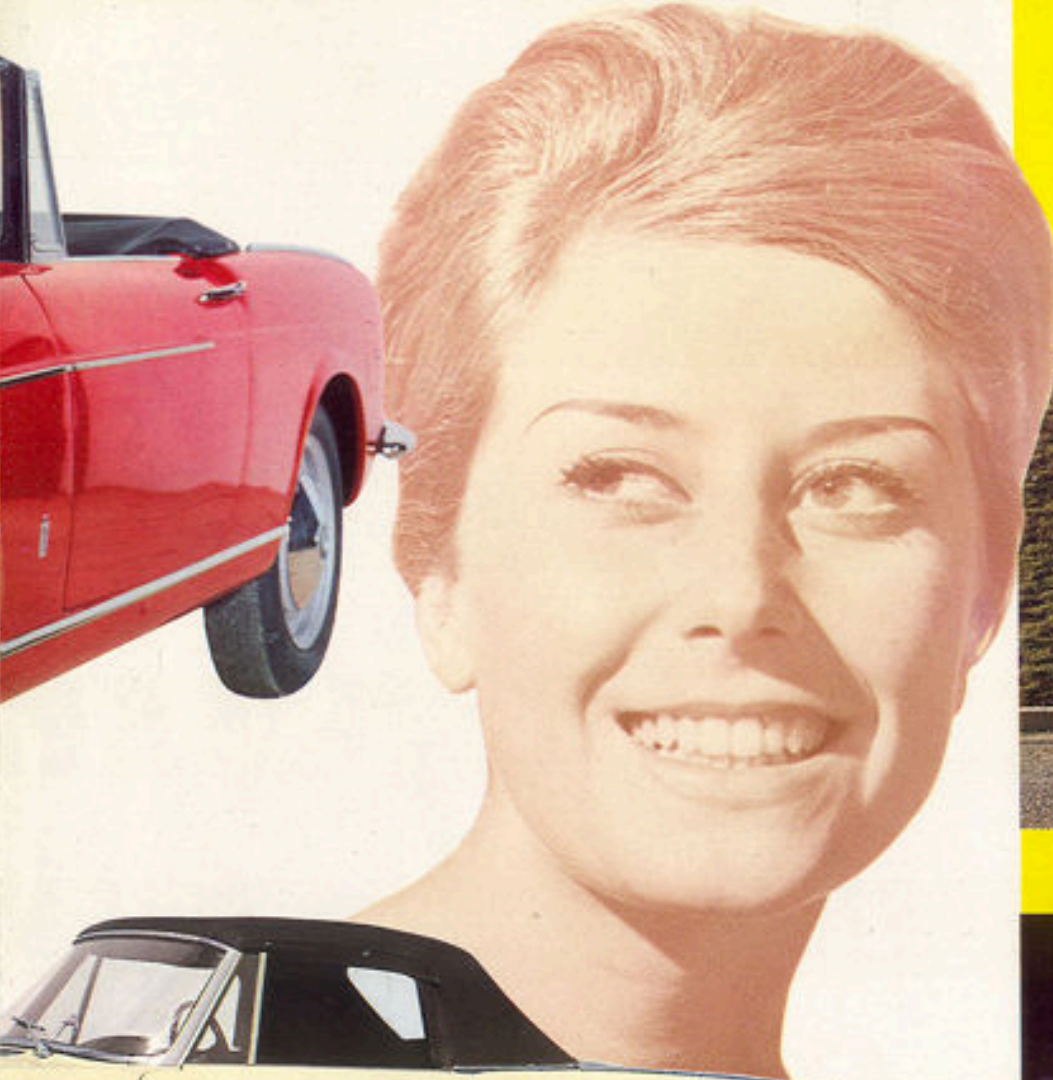
The cabriolet body offers the advantage of an open car for more enjoyable driving in fine weather. In bad weather the car can be entirely closed by putting up the steel-framed canvas hood, which is completely hidden when down.

The 1500 S and 1200 cabriolets have mechanical qualities of the highest class. Stylish, streamlined coachwork.

The 1500 S cabriolet (own engine) has sports car performance. Speed about 105 m. (170 km.) p.h. On request and at extra charge the car can be equipped with disc brakes.

The 1200 cabriolet is a very brilliant car. Speed about 90 m. (145 km.) p.h.





FIAT 1200 cabriolet

The Coupé



Fiat 1200 Coupé (Pinin Farina)



Fiat 1500 Coupé (Pinin Farina)

Fiat 1500 S

Integral construction: wheelbase 2.34 m. (7' 8 7/64"). Front track 1.237 m. (4' 0 11/16"). Rear track 1.215 m. (3' 11 53/64").

Engine: 4 cylinders. Capacity: 1491 c.c. Bore 78 mm. Stroke 78 mm. Compression ratio: 8.6 : 1. Power: 78 PS (DIN), 90 h.p. (SAE). Cast iron cylinder block. Aluminium cylinder head with hemispherical combustion chambers. Five-bearing crankshaft. Two O.H. camshafts. Water-heated inlet manifold. Twin choke carburettor. Forced lubrication by gear pump. Centrifugal oil filter. Aluminium sump. Cooling water circulated by centrifugal pump.

Clutch: dry, single plate.

Gearbox: four speeds and reverse. Constant meshing in second and third gears. Ring synchronisers on second, third and top speeds. Gear lever between the seats.

Transmission shaft: in two sections, with centre bearing, cardan joints and flexible rubber coupling.

Rear axle with hypoid bevel crown and pinion; ratio 10/43.

Front suspension by swinging arms, coil springs and telescopic double-acting shock-absorbers and stabiliser bar.

Rear suspension by leaf springs with telescopic double-acting shock-absorbers and stabiliser bar.

Steering: by worm and roller.

Front brakes: with double cylinder sheet-metal shoes; rear brakes with single leading sheet-metal shoes; pressure reducer on rear wheels. Parking and emergency brake acting on rear wheel brake shoes.

Petrol tank: capacity 45 litres (8.9 Imp. gall.).

Disc wheels with 4 1/2 J rims, and 155-15" tyres. Spare wheel in luggage boot.

Electrical equipment 12-volt, 230 Watt dynamo, 40 Amp. battery.

Spray-type windscreen washer.

Electric cigarette lighter.

Radio: supplied on request, at extra charge.

Speed: about 170 km (105 miles) p. h.

On request and at extra charge the car is equipped with disc brakes.

Fiat 1200

Integral construction: wheelbase 2.34 m. (7' 8 7/64"). Front track 1.232 m. (4' 0 1/2"). Rear track 1.215 m. (3' 11 53/64").

Engine: 4 cylinders. Capacity: 1221 c.c. Bore 72 mm. Stroke 75 mm. Compression ratio: 8.25 : 1. Power: 52 PS (DIN), 63 h.p. (SAE). Cast iron cylinder block. Aluminium cylinder head. Three-bearing crankshaft. Overhead valves. Water-heated inlet manifold. Twin choke carburettor. Forced lubrication with gear pump. Cooling water circulated by centrifugal pump.

Clutch: dry, single plate.

Gearbox: four speeds and reverse. Constant meshing in second and third gears. Ring synchronisers on second, third and top speeds. Gear between the seats.

Transmission shaft: in two sections, with centre bearing, cardan joints and flexible rubber coupling.

Rear axle with hypoid bevel crown and pinion; ratio 10/43.

Front suspension by swinging arms, coil springs and hydraulic telescopic double-acting shock-absorbers and stabiliser bar.

Rear suspension by leaf springs with hydraulic telescopic double-acting shock-absorbers and stabiliser bar.

Steering: by worm and roller.

Hydraulic brakes with self-centering shoes on all four wheels. Parking and emergency brake acting on rear brake shoes.

Petrol tank: capacity 38 litres (8 1/4 Imp. gall.).

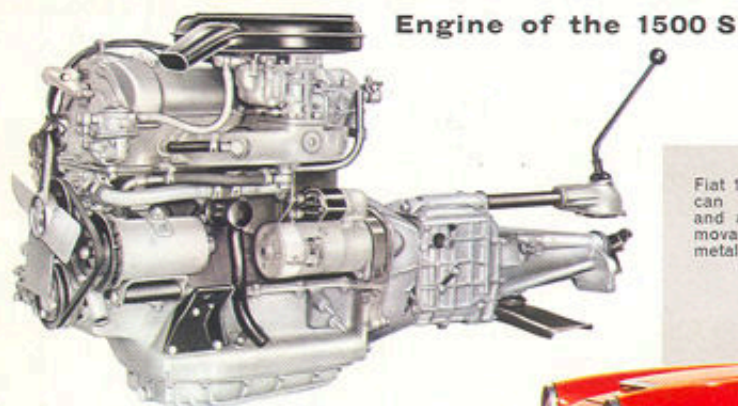
Disc wheels: with 3 1/2 J rims, and 5.20-14 tyres. Spare wheel in luggage boot. White wall tyres.

Electrical equipment: 12-volt, 230 Watt dynamo, 40 Amp. battery.

Spray-type windscreen washer.

Radio: supplied on request, at extra charge.

Speed: about 145 km (90 miles) p. h.



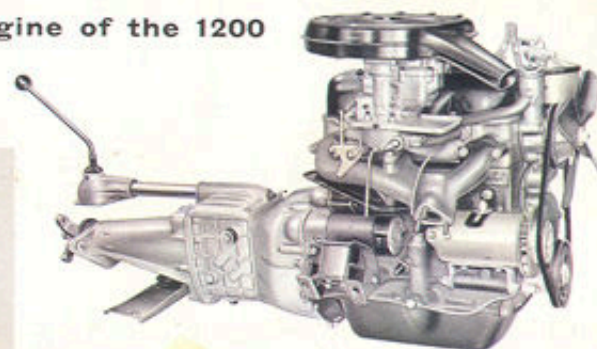
Engine of the 1500 S

Power: 78 PS (DIN), 90 h.p. (SAE).
Cylinder capacity 1491 c.c.
Compression ratio 8.6 : 1.
Separate inlet ducts
to each cylinder.



Fiat 1500 S and 1200 cabriolets can be supplied, optionally and at extra cost, with a removable hard top (in sheet metal).

Engine of the 1200



Power: 52 PS (DIN),
63 h.p. (SAE).
Cylinder capacity 1221 c.c.
Compression ratio 8.25 : 1.
Separate inlet ducts
to each cylinder.