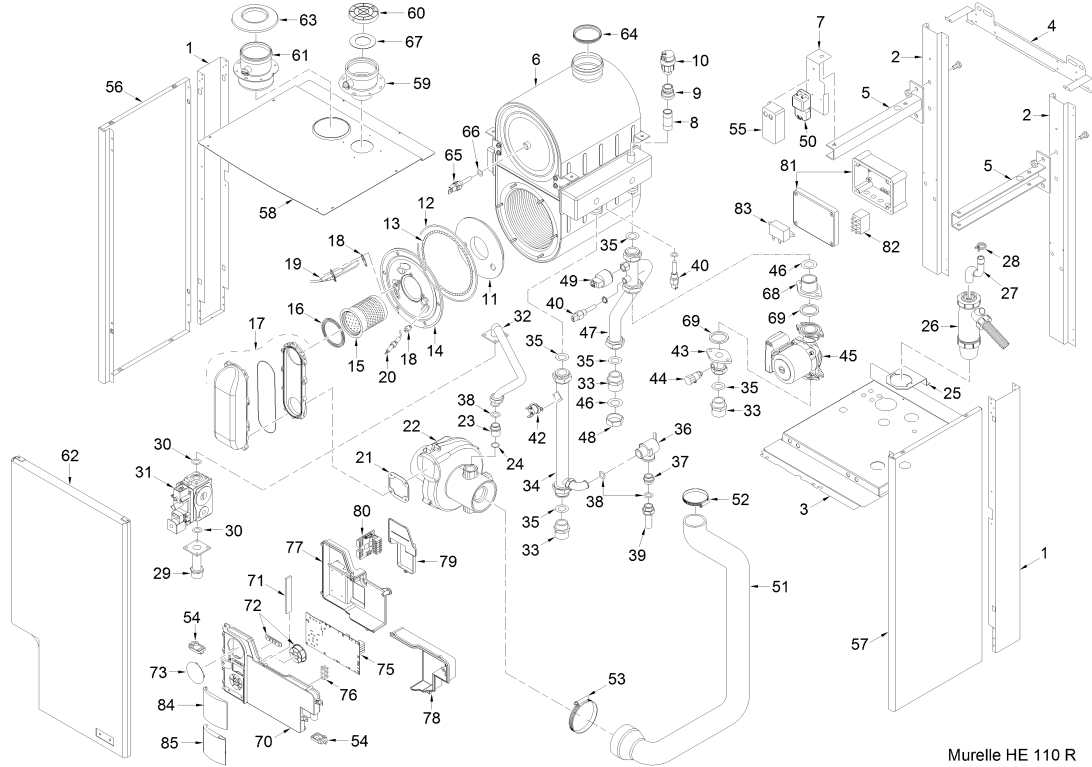




Fonderie Sime S.p.A. - Via Garbo, 27 - 37045 Legnago (VR) - www.sime.it
 Tribunale Verona 13531 - R.E.A. VR 171357 - C.C.P. 19423375 - N° Mecc. VR 014435
 Capitale Sociale Euro 5.521.200 int. versato - Codice Fiscale/Partita IVA n. IT 01275930236

Comfort Ambiente - Via Garbo, 27 - 37045 Legnago (VR)
 Tel +39 0442 631111 - Fax Servizio Commerciale: Italia +39 0442 631291 - Estero +39 0442 631293
 Fax Servizio Tecnico +39 0442 631292 - Fax Ufficio Acquisti +39 0442 631292 - Fax Amministrazione +39 0442 631336

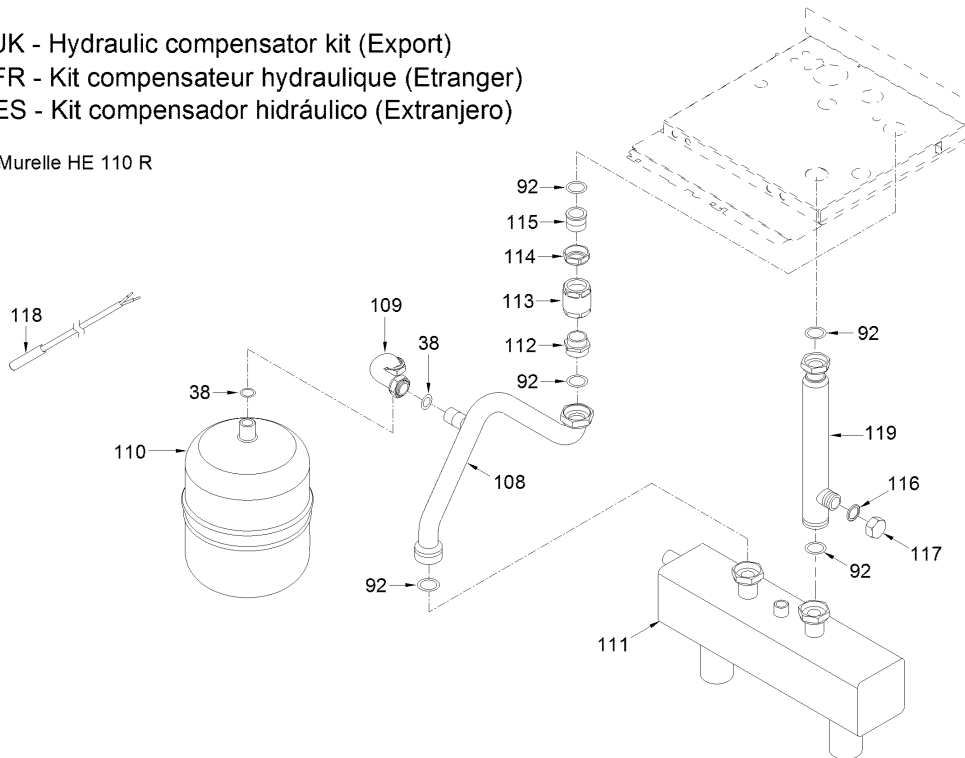
8104961 CALD.MET. MURELLE HE 110 R CND



Murelle HE 110 R

UK - Hydraulic compensator kit (Export)
 FR - Kit compensateur hydraulique (Etranger)
 ES - Kit compensador hidráulico (Extranjero)

Murelle HE 110 R



Posiz.	Codice	Descrizione
001	6138555	Right/left hand side frame part
002	6256731	Main exchanger rear support
003	6138896	Frame assembly lower side
004	6138715	Frame assembly upper support
005	6294823	Main exchanger support

006	6278919	Main exchanger body	
007	6189562	Ignition transformer panel brac	
008	6070815	Extension MM 3/4"	
009	6104710	Reduction	
010	6013106	Automatic air vent 1/2"	
011	6269009	Main exchanger door insulation	
012	6278967	Combustion chamber O-ring	
013	6278968	Glass fibre sealing cord	
014	6278854	Main exchanger door	
015	6278320	Premix burner	
016	6174823	Gasket for burner flange	
017	6278880	Air-gas hose	
018	6174809	Gasket for ignition electrode	
019	6221647	Ignition electrode	
020	6221623	Ionisation electrode	
021	6174816	Gasket for fan flange	
022	6261416	Fan	
023	6274185	Burner nozzle	MET
023A	6274186	Burner nozzle	GPL
024	6226407	O-ring 130 ø 22,22x2,62	
025	6010822	Water trap bracket	
026	6277201	Water trap	
027	6034155	Condensate drainage pipe	
028	2051123	Clamp diam. 24,2	
029	6195215	Gas inlet pipe	
030	2030223	Gasket NPR 24x35x4	
031	6238504	Gas valve	
032	6226970	Pipe connecting gas valve-mixer	
033	6120529	Nipple 1"1/4 x 1"1/2	
034	6216245	C.H. flow pipe	
035	2030256	Gasket diam.26x38x3	
036	6040223	Pressure relief valve 60 PSI	
037	6120502	Nipple 3/4"x3/4" OT	
038	2030249	Gasket Ø 24x17x3	
039	6142511	Pipe diam. 18x70x3/4"	
040	6231370	Plunged sensor NTC	
041	6022010	Sensor gasket	
042	6146713	Safety stat	
043	6277954	Pipe conn. C.H. flow - pump	
044	6017211	Manual air vent 1/4"	
045	6124827	Pump	
046	2030254	Gasket Ø 33x44x3	
047	6277942	Pump connecting pipe	
048	6229505	Plug 1-1/2"	
049	6273610	Water pressure transducer	
050	6098319	Ignition transformer	
051	6001155	Pipe Ø 60	
052	2051200	Hose clamp Ø 50-70	
053	2051202	Hose clamp Ø 90-110	
054	6302000	Plastic pin	
055	6159710	Ignition transformer protection	
056	6242235	Casing left hand side panel	
057	6242135	Casing right hand side panel	
058	6010886	Upper protection shield	
059	6083066	Flue inlet flange Ø 80	
060	6190001	Intake terminal Ø 80	
061	6083065	Reducer DN 80-100"	
062	6304233	Casing front panel	
063	6230402	External ring for pipe diam.80	
064	6248829	Air inlet / smoke outlet gasket	
065	6277131	Probe NTC D.4X47	
066	6226440	O-ring diam. 9,25x1,78	
067	6028692	Air diaphragm Ø 79/46	
068	6277955	Pipe connecting pump	
069	6256742	Pump gasket	
070	6304702	Control panel	
071	6305160	Guidelight with led	
072	6305120	Kit Rubber button	
073	6247330	Cap for time programmer	
075	6301481	Main PCB	
076	2211610	Earth faston	
077	6305002	Main cover	
078	6305012	connection cover	
079	6305022	Time programmer cover	
080	6301465	PCB expansion	
081	6002723	Junction box	
082	6306901	Relay	

083	6098318	Transformer
084	6304801	Top door
085	6304812	Lower door
092	2030206	Piracriten gasket Ø 33,5x45x2
108	6227440	C.H. return pipe
109	6227683	Pipe connecting D.H.W. expans.
110	6245108	D.H.W. expansion vessel I. 8
111	6216313	Hydraulic compensator
112	6120527	Nipple 1"1/2 X 1"1/4
113	6238304	Check valve
114	6271810	Pipe fitting 1"1/2
115	6120541	Pipe fitting 1"1/4"
116	2030257	Gasket diam. 30x22x3
117	6229502	Plug 1" F. OT
118	6231331	D.H.W. tank sensor
119	6291967	C.H. flow pipe
700	5185141	Conversion kit to LPG
701	6281534	Gaskets kit
702	6319695	Murelle-Format-.....o-ring kit
703	5197191	Complete control panel
704	6323836	3 pole cable connector
705	6323837	4 pole cable connector
706	6323835	5 pole cable connector
707	6323829	9 pole cable connector
708	6323831	14 pole cable connector
709	6323834	Gas valve connector
710	6323838	4 pole cable connector
711	6316202	Connector 4 poli
712	6316203	Connector 4 poli CN4
713	6316204	Connector 8 poli CN7
714	6316200	Connector 2 poli
715	6316201	Connector 4 poli
717	6201901	Cable with plug
718	6316289	Ionisation lead L=1100
719	8089929	Reduction M/F 80/90 PP
720	6034311	Pipe PP ø80 L=60 M/M
721	6253401	Fuse holder Ø5x20
722	6233502	Fuse T 5A for control box CM 19
723	5184831	Accessories gas cock - curve