



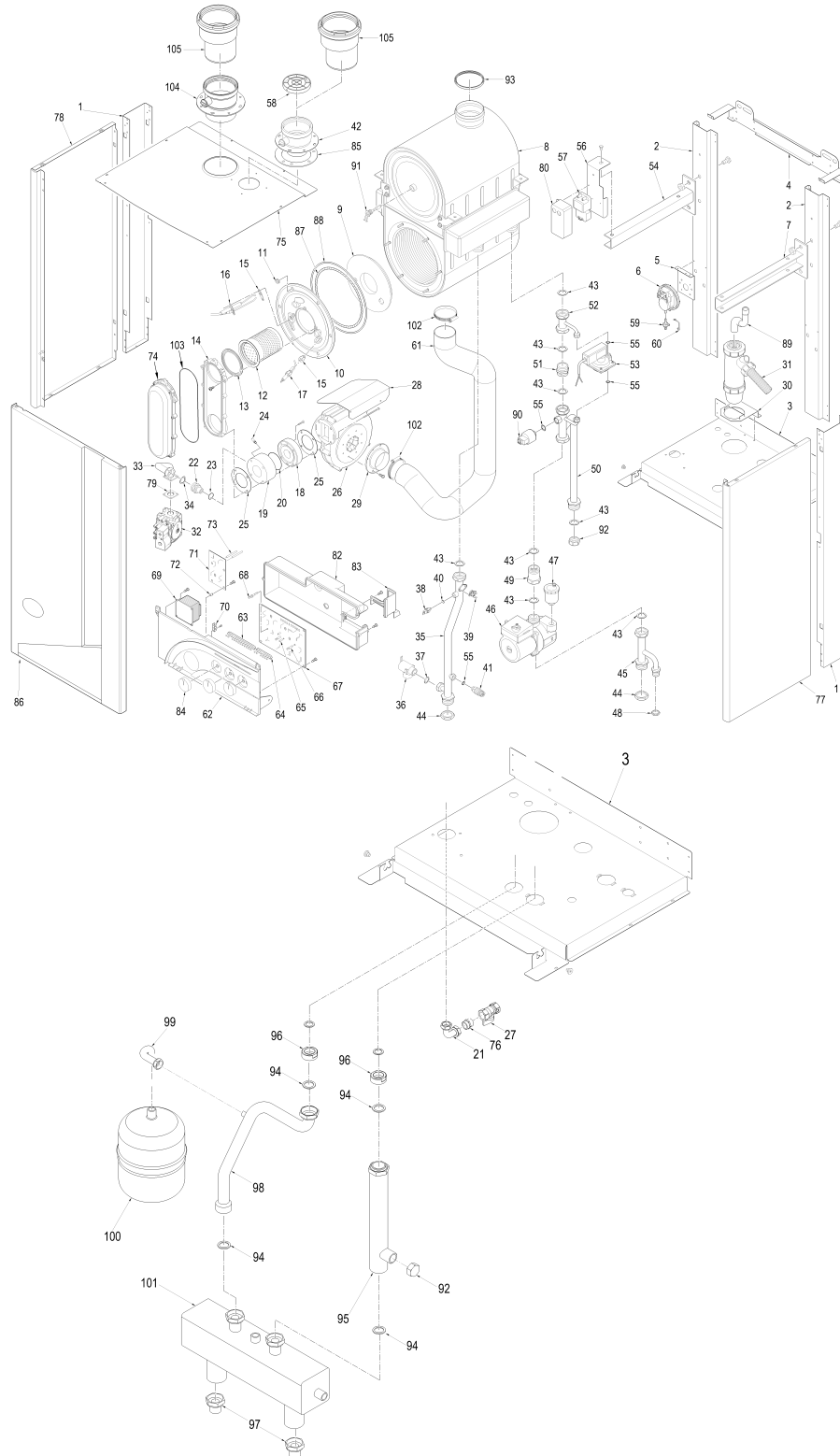
Fonderie Sime S.p.A. - Via Garbo, 27 - 37045 Legnago (VR) - www.sime.it
 Tribunale Verona 13531 - R.E.A. VR 171357 - C.C.P. 19423375 - N° Mecc. VR 014435
 Capitale Sociale Euro 5.521.200 int. versato - Codice Fiscale/Partita IVA n. IT 01275930236

Comfort Ambiente - Via Garbo, 27 - 37045 Legnago (VR)

Tel +39 0442 631111 - Fax Servizio Commerciale: Italia +39 0442 631291 - Estero +39 0442 631293

Fax Servizio Tecnico +39 0442 631292 - Fax Ufficio Acquisti +39 0442 631292 - Fax Amministrazione +39 0442 631336

8093579 CALD.MET PLANET DEWY 60BFR CDN



Posiz.	Codice	Descrizione
001	6138555	Right/left hand side frame part
002	6256730	Main exchanger rear support
003	6138811	Frame assembly lower side
004	6138714	Frame assembly upper support
005	6229101	Smoke pressure switch bracket

006	6225715	Air pressure switch
007	6294821	Main exchanger R.H. side suppor
008	6278914	Main exchanger body
009	6269007	Main exchanger door insulation
010	6278852	Main exchanger door
011	6150010	Nut M6 OT
012	6278306	Premix burner
013	6174817	Gasket for burner flange
014	6278806	Air-gas hose
015	6174809	Gasket for ignition electrode
016	6221633	Ignition electrode
017	6221623	Ionisation electrode
018	6274311	Upstream side mixer part
019	6274310	Downstream side mixer part
020	6226427	O-ring 156
021	6142453	Bend 3/4" Ø 18
022	6274150	Burner nozzle ø 12,00 natural g
022A	6274140	Nozzle ø 6,70 LPG
023	6226429	O-ring 121
024	6235801	Pressure test nipple M6
025	6174812	Mixer/hose gasket
026	6261407	Fan
027	6177540	Gas cock 3/4"
028	6189567	Fam protection bracket
029	6083053	Duct flange Ø 60
030	6010822	Water trap bracket
031	6277201	Water trap
032	6243832	Gas valve
033	6277411	Pipe connecting gas valve-mixer
034	2030228	Gasket Ø 17x24x2
035	6216236	C.H. system flow pipe
036	6040221	Pressure relief valve
037	2030227	Gasket Ø 12x18x2
038	6231351	Plunged sensor
039	6146722	95°C safety stat
040	6022010	Sensor gasket
041	6017210	Manual air vent 1/4"
042	6083062	Flue inlet flange Ø 80
043	2030229	Gasket Ø 22x30x2
044	6146306	Brass nut 1" OT
045	6277925	Pump connecting pipe
046	6124819	Circulating pump
047	6013100	Automatic air vent 3/8"
048	6146301	Brass nut 1/2"
049	6238303	Non return valve 1"Mx1"F
050	6277924	Transducer connecting pipe
051	6120517	Nipple 1" x 1" OT with diaphrag
052	6277906	Exchanger connecting pipe
053	6211704	Differential pressure switch
054	6294822	Main exchanger L.H. side suppor
055	2030225	Gasket Ø 5,5x11x2
056	6189562	Ignition transformer panel brac
057	6098316	Ignition transformer
058	6190001	Intake terminal Ø 80
059	6280500	3-ways junct. with press. test
060	6280550	Cap for 3-ways junction
061	6001121	Flexible pipe Ø 60 L=1200
062	6272902	Control panel
063	6273200	Guidelight - 12 ways out
064	6273201	Guidelight - 6 ways out
065	6201501	Trimmer spindle Ø 5
066	6201502	Trimmer spindle Ø 6
067	6230622	Main P.C.B.
068	6201503	Selector spindle
069	6240707	Transformer 120/24V
070	2211610	Earth faston
071	6260501	Fan driver PCB
072	2213230	Spacer h=6.4
073	6201504	Trimmer spindle Ø 5 L=34
074	6278890	Air-gas hose cover
075	6010823	Upper protection shield
076	6120525	Nipple 3/4"x3/4" OT
077	6274060	Casing right hand side panel
078	6273960	Casing left hand side panel
079	6162401	Square gasket
080	6159710	Ignition transformer protection
081	6273304	Flap door

082	6273001	Control panel protecting cover
083	6273101	Room stat cover
084	6230922	Knob Ø 40
085	6028703	Gasket for duct flange
086	6273516	Casing front panel
087	6278968	Glass fibre sealing cord
088	6278967	Combustion chamber O-ring
089	6034152	Condensate drainage rubber pipe
090	6273603	Water press.transd. HUBA CONTR
091	5191903	Smoke stat kit
092	6229502	Plug 1" F. OT
093	6248829	Air inlet / smoke outlet gasket
094	2030206	Piracriten gasket Ø 33,5x45x2
095	6291967	C.H. flow pipe
096	6120522	Reducer 1"1/2 x 1"
097	6104712	Brass M.F. bushing 2"
098	6227424	C.H. return pipe
099	6227680	Pipe connecting D.H.W. expans.
100	6245108	D.H.W. expansion vessel I. 8
101	6216312	Hydraulic compensator
102	2051200	Hose clamp Ø 50-70
103	6174819	Air-gas hose gasket
104	6083064	Flue inlet flange Ø 80
105	8089929	Reduction M/F 80/90 PP
700	5188457	Complete control panel
701	6247701	3-ways junction
703	6186589	Ionisation lead L=600
704	6316225	3 pole cable connector
707	6316221	14 pole connector
708	6316220	4 pole connector
710	6278613	8 pole cable connector
711	6316219	6+4 pole cable connector
712	6316222	7 pole cable connector
713	6316223	6 pole cable connector
714	6316224	4 pole cable connector
715	6231331	D.H.W. tank sensor
716	6281534	Gaskets kit