

Novo, con la sua geometria minimale è lo scaldasalviette per eccellenza. La forma fluida rende Novo un completamento dell'ambiente abitativo. Disponibile in 4 altezze e larghezze da 400 mm a 1000 mm. Con l'inserimento della resistenza elettrica (optional) può funzionare anche nei periodi in cui l'impianto è spento.



Novo, altezza 1808 mm, larghezza 600 mm, Amaranto - RAL 3003

Caratteristiche costruttive

radiatore scaldasalviette in acciaio con elementi orizzontali a tubi tondi di diametro 25 mm
collettori laterali a sezione semiovale 40x30 mm
filettature estremità collettore e attacchi centrali (50 mm)
primo tubo inferiore 1/2" Gas destra
pressione di esercizio massima ammessa 8 bar
temperatura di esercizio massima ammessa 95°C.

Dotazione di serie

coppia di chela per fissaggio a muro
distanziere regolabile a muro
valvola sfiato da 1/2"

Tipi di allacciamento disponibili

T1=Allacciamento Standard, T2 = Allacciamento 50mm

Dati tecnici

Modello	Profondità (mm)	Altezza (mm)	Larghezza (mm)	Interasse (mm)	Peso (kg)	Capacità _(tt)	$\Delta t=50^{\circ}\text{C}$ (kcal/h)	$\Delta t=50^{\circ}\text{C}$ (Watt)	$\Delta t=40^{\circ}\text{C}$ (Watt)	$\Delta t=30^{\circ}\text{C}$ (Watt)	$\Delta t=20^{\circ}\text{C}$ (Watt)	Esponente	Funz. misto (Watt)
764 19 tubi 1 intervallo	30	764	400	356	5,10	4,00	299,0	348,0	266,0	188,0	115,0	1,209	300
764 19 tubi 1 intervallo	30	764	450	406	5,60	4,40	331,0	385,0	294,0	208,0	128,0	1,206	400
764 19 tubi 1 intervallo	30	764	500	456	6,20	4,80	363,0	422,0	323,0	229,0	140,0	1,203	400
764 19 tubi 1 intervallo	30	764	550	506	6,70	5,20	395,0	460,0	352,0	249,0	153,0	1,199	400
764 19 tubi 1 intervallo	30	764	600	556	7,20	5,60	427,0	497,0	381,0	270,0	166,0	1,196	400
764 19 tubi 1 intervallo	30	764	750	706	10,10	6,70	523,0	609,0	467,0	332,0	205,0	1,185	400
764 19 tubi 1 intervallo	30	764	1000	956	13,20	8,60	684,0	795,0	612,0	438,0	272,0	1,168	700
1196 29 tubi 2 intervalli	30	1196	400	356	7,80	6,20	424,0	493,0	378,0	268,0	166,0	1,190	400
1196 29 tubi 2 intervalli	30	1196	450	406	8,60	6,80	475,0	552,0	423,0	301,0	186,0	1,190	400
1196 29 tubi 2 intervalli	30	1196	500	456	9,40	7,40	526,0	611,0	469,0	333,0	205,0	1,190	700
1196 29 tubi 2 intervalli	30	1196	550	506	10,20	8,10	577,0	671,0	514,0	365,0	225,0	1,190	700
1196 29 tubi 2 intervalli	30	1196	600	556	10,90	8,70	628,0	730,0	560,0	397,0	245,0	1,190	700
1196 29 tubi 2 intervalli	30	1196	750	706	15,50	10,20	780,0	908,0	696,0	494,0	305,0	1,190	1000
1196 29 tubi 2 intervalli	30	1196	1000	956	20,20	13,20	1.035,0	1.204,0	923,0	656,0	405,0	1,189	1000
1520 36 tubi 3 intervalli	30	1520	400	356	9,80	7,80	533,0	620,0	470,0	329,0	199,0	1,242	400
1520 36 tubi 3 intervalli	30	1520	450	406	10,80	8,50	598,0	695,0	527,0	369,0	223,0	1,241	700
1520 36 tubi 3 intervalli	30	1520	500	456	11,70	9,30	663,0	771,0	585,0	409,0	248,0	1,240	700
1520 36 tubi 3 intervalli	30	1520	550	506	12,70	10,10	728,0	847,0	642,0	450,0	272,0	1,239	700
1520 36 tubi 3 intervalli	30	1520	600	556	13,60	10,80	793,0	922,0	700,0	490,0	297,0	1,237	1000
1520 36 tubi 3 intervalli	30	1520	750	706	19,20	12,80	988,0	1.149,0	872,0	612,0	371,0	1,234	1000

1520 36 tubi 3 intervalli	30	1520	1000	956	25,10	16,40	1.313,0	1.527,0	1.161,0	815,0	495,0	1,228	1000
1808 44 tubi 3 intervalli	30	1808	400	356	11,80	9,40	667,0	775,0	589,0	414,0	252,0	1,228	700
1808 44 tubi 3 intervalli	30	1808	450	406	13,00	10,30	740,0	860,0	655,0	461,0	280,0	1,223	700
1808 44 tubi 3 intervalli	30	1808	500	456	14,20	11,30	813,0	946,0	721,0	508,0	310,0	1,218	1000
1808 44 tubi 3 intervalli	30	1808	550	506	15,30	12,20	886,0	1.031,0	786,0	555,0	339,0	1,213	1000
1808 44 tubi 3 intervalli	30	1808	600	556	16,50	13,10	960,0	1.116,0	852,0	602,0	369,0	1,208	1000
1808 44 tubi 3 intervalli	30	1808	750	706	23,40	15,50	1.179,0	1.372,0	1.051,0	746,0	460,0	1,193	1000
1808 44 tubi 3 intervalli	30	1808	1000	956	30,50	20,00	1.546,0	1.797,0	1.385,0	990,0	617,0	1,167	1000

(*) Grazie alle elevate prestazioni dei radiatori Novo, il Δt ideale per la progettazione a bassa temperatura è 30°C

Per Δt diversi da 50°C utilizzare la formula: $Q=Q_n (\Delta t / 50)^n$

Dotazione di serie

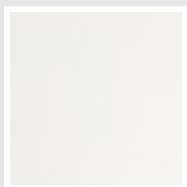
- coppia di chela per fissaggio a muro
- distanziera regolabile a muro
- valvola sfiato da 1/2"

Imballo

L'attenzione che Irsap riserva ad ogni suo radiatore si manifesta anche nella cura per l'imballo. Ogni radiatore viene protetto con cuffie di materiale antiurto; questa particolare protezione serve ad evitare danni e graffi accidentali durante la spedizione e la movimentazione nei cantieri. Tutti gli imballi devono essere smaltiti con riferimento alla normativa vigente e in conformità al recepimento degli enti di competenza.

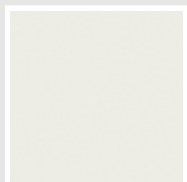
Colori e finiture

STANDARD

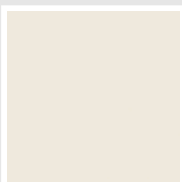


Bianco Standard
Cod. 01

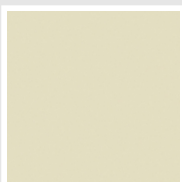
CLASSIC



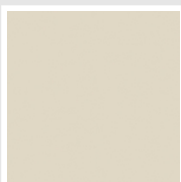
Bianco Edelweiss
Opaco
Cod. 34



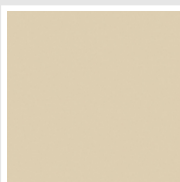
Bianco Whisper
Peach
Cod. 36



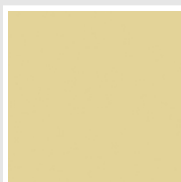
Avorio - RAL 1013
Cod. 02



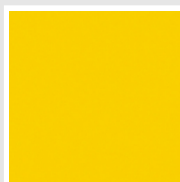
Jasmin Opaco
Cod. 35



Beige Naturale
Cod. 38



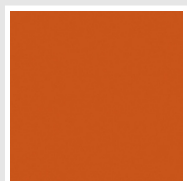
Beige Cream
Cod. 26



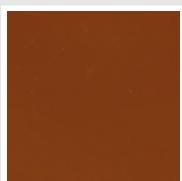
Giallo - RAL 1021
Cod. 04



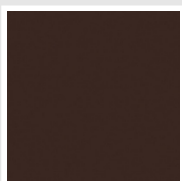
Giallo Melone - RAL
1028
Cod. E7



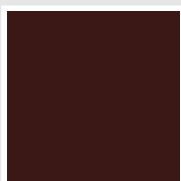
Arancio - RAL 2004
Cod. 17



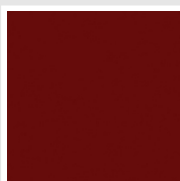
Marrone Ruggine -
RAL 8004
Cod. E1



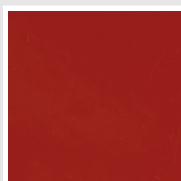
Marrone - RAL 8017
Cod. 09



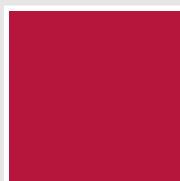
Vinaccia - RAL 3005
Cod. H9



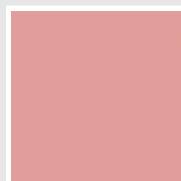
Amaranto - RAL 3003
Cod. 06



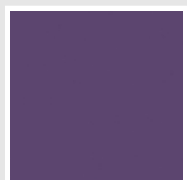
Rosso - RAL 3000
Cod. 05



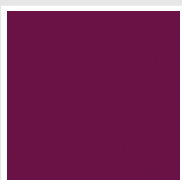
Rosso Fragola - RAL
3018
Cod. Y3



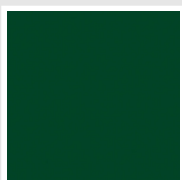
Rosa - RAL 3015
Cod. R2



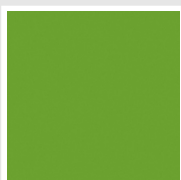
Lilla Bluastro - RAL
4005
Cod. R3



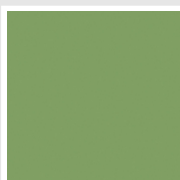
Porpora Traffico -
RAL 4006
Cod. R6



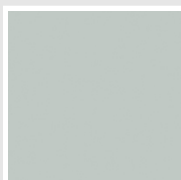
Verde Bosco - RAL
6005
Cod. 19



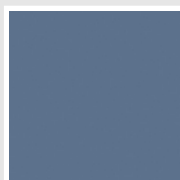
Verde Erba - RAL
6018
Cod. N3



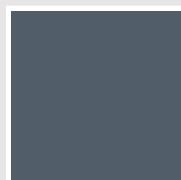
Verde Salvia - RAL
6021
Cod. E6



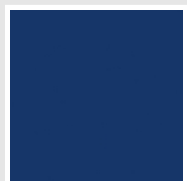
Verde Greenwich
Cod. 28



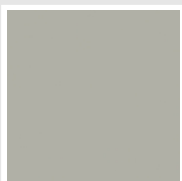
Blu Pastello - RAL
5024
Cod. G7



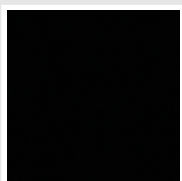
Blu Colomba - RAL
5014
Cod. G9



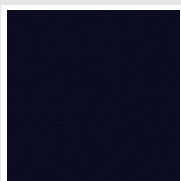
Blu Hewi
Cod. 11



Grigio Manhattan
Cod. 03



Nero - RAL 9005
Cod. 10



Deep Blue
Cod. 2F

SPECIAL



Bianco Perla
Cod. 16

Quartz 1
Cod. 1C

Sablé
Cod. Y4

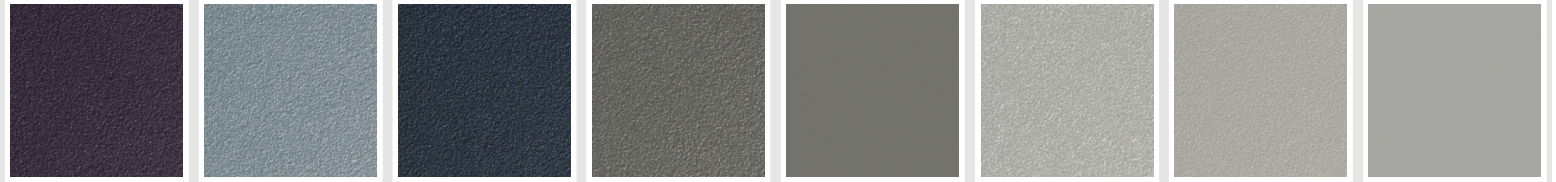
Quartz 2
Cod. 2C

Sunstone
Cod. 2D

Petra
Cod. 3D

Bruno Tabacco
Cod. 1B

Flame Red
Cod. 7D



Purple Blue
Cod. 1D

Azurite
Cod. 6D

Azurite 3
Cod. 6C

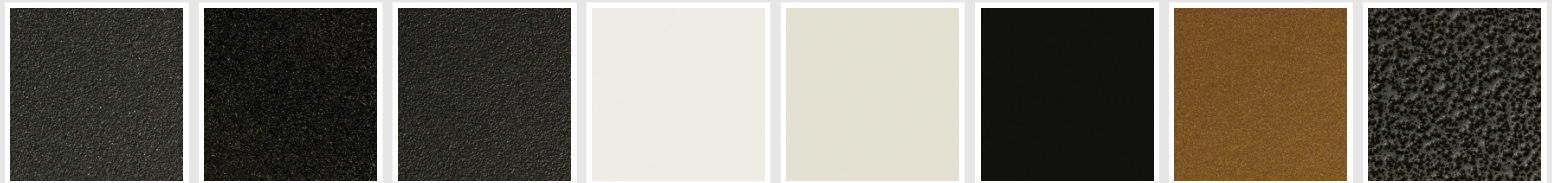
Grigio Medio
Cod. 4D

Grigio Titanio
Metallizzato - RAL
9023
Cod. L3

Grigio Silver
Cod. 5D

Grigio Perla
Cod. L6

Grigio Alluminio -
RAL 9006
Cod. B4



Nero Grafite
Cod. 18

Grigio Quarzo
Cod. 31

Nero Satinato
Cod. 30

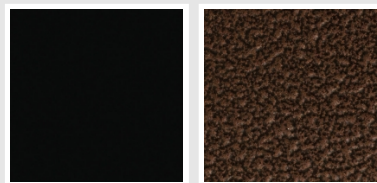
Luxury White
Cod. J7

Bianco Opaco
Cod. J8

Nero Opaco
Cod. K1

Bronzo
Cod. J9

Grigio Martellato
Cod. 32



Luxury Black
Cod. J3

Rame Martellato
Cod. J4

SURFACES



Trattamento Loft
Cod. TR

Taftah Argento
Cod. K4

Taftah Platino
Cod. K3

Taftah Oro
Cod. K2

Grey Shadow
Cod. X6

I colori rappresentati in questa cartella non sono da considerarsi impegnativi. I diversi processi tecnologici di verniciatura ed i materiali utilizzati per la realizzazione possono non avere una perfetta corrispondenza cromatica con il prodotto consegnato. L'azienda Irsap si riserva la facoltà di apportare in qualsiasi momento tutte le modifiche necessarie per il miglioramento del prodotto.