

No fuss, fast scanning at an affordable price.

Entry Level

Amazingly slim, yet loaded with features. You can expect impressive results from this 2400 x 4800 optical dpi resolution, 48-bit colour scanner. Scan an image, or create an email attachment, PDF file or colour copy¹ in just one step. With the CanoScan LIDE110 great results and easy operation come together in a stylish and compact design.



Key Features

Advanced Features Make Scanning Easy

- One-touch buttons automatically create an image file, PDF file, a colour copy¹, or an email attachment in one easy step.
- Dedicated PDF button makes the creation of multiple page PDF files simple.
- Scan multiple photos at once using Multi-Scan mode. Single-pass multi-scan automatically aligns, scans and names each image as a separate file²
- Vertical scanning with included clip-on stand
- Single USB lead transfers data and provides power keeping your desk clutter free.

User Friendly Software

- Solutions Menu EX and MP Navigator EX offers user-friendly scanning for a range of different applications such as copy (print)⁶, scan, email, OCR, and PDF save.
- Use the software to correct backlight, remove scratches and dust and also remove graininess
- Supports Mac and PC for quick and easy scanning



Quality Scans³

High quality scanning up to 2400 x 4800 optical dpi high resolution and 48-bit superior gradation



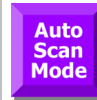
Fast Data Transfer⁴

USB 2.0 Hi-Speed interface for fast data transfer



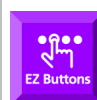
Advanced Design

Advanced Z-Lid and scanning in the upright position



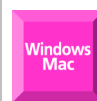
Auto Scan Mode

No hassles, no worry – just quick and easy scanning with auto scan mode



Easy Operation

4 one touch buttons Scan / Copy / PDF / E-mail for easy operation

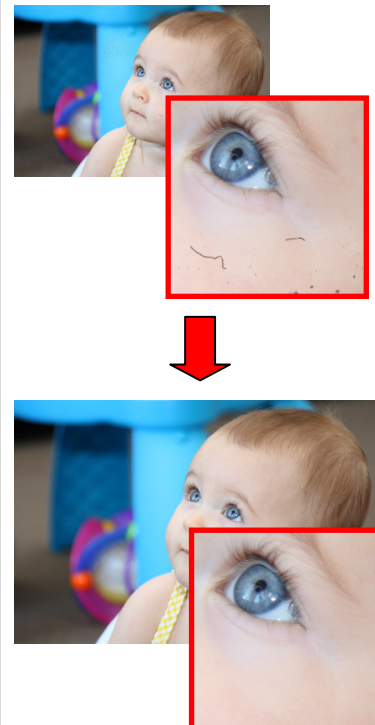


PC and Mac

Use scanner on either PC or Mac for stunning results

CanoScan LIDE110 Technical Specifications	
General	
Scanner Type	Desktop Colour Flatbed Scanner
Scanning Elements	CIS (Contact Image Sensor)
Light Source	RGB three-colour LED
Resolution	
Optical Resolution¹	2400 x 4800 dpi
Selectable Resolution	25 - 19200 dpi
Scanning Gradation	
Colour	48-bit input/48 or 24-bit output
Greyscale	16-bit input/8-bit output
Maximum Size	
Document/Photo	A4/LTR, 216 x 297 mm
Scan Speed	
Preview Speed²	Approx. 14 sec.
Scanning Speed	
Colour⁵	8.4 msec/line (1200 dpi) 16.7 msec/line (2400 dpi)
B & W	2.9 msec/line (1200 dpi) 5.6 msec/line (2400 dpi)
User Interface	
One-Touch Buttons	4 Buttons - Scan, Copy, PDF File, E-mail
Multi-Scan Mode (Photo)	Yes
PDF Save Function	Yes
OCR Text Recognition	Yes
Included Software	Solution Menu EX; MP Navigator EX, Adobe RGB Profile for Windows
Included as Standard	LIDE110, USB Cable, Scanner Stand, Setup CD ROM
Other	
Interface⁴	USB 2.0 Hi-Speed
Operating Environment	Windows: XP SP2 or later / Windows Vista / Windows 7 Mac: OS X 10.4.11 or later (USB 2.0)
Power Supply	Via USB port (additional power cord not required)
Power Consumption	2.5W (Max), 1.4W (stand-by mode)
Dimensions	250 x 370 x 40mm
Weight	Approx. 1.6kg

Dust & Scratch Reduction



Fading Correction



Disclaimers

- Optical resolution is a measure of maximum hardware sampling resolution, based on ISO 14473 standard. Correct procedures outlined in the manual for photo positioning should be followed when using Multi-Scan mode.
- Preprocessing time is not included.
- USB 2.0 Hi-speed performance requires Vista, Windows XP with Service Pack 1 or Windows 2000 with Service Pack 4 with pre-installed USB 2.0 High-speed port. Drivers are provided for Windows operating systems only. Other operating systems are not supported.
- Excluding processing time. Highest available USB speed quoted. Print speed may vary with the content of the document and the processing speed of the host computer. Time from when print data is received.
- The fastest speed in Hi-Speed USB on Windows PC. Transfer time to computer is not included.
- A separate printer is required. Sold separately

Subject to change without notice