

ALCATEL
onetouch.
Pop3⁽⁵⁾

5015D

5015X



www.alcatelonetouch.com

ALCATEL
onetouch.

ALCATEL
onetouch.

Note:

This is a shared user manual for 5015X/5015D, specifying Dual SIM information where relevant.

Table of Contents

Safety and use.....	4
General information	11
1 Your mobile	13
1.1 Keys and connectors	13
1.2 Getting started	16
1.3 Home screen.....	20
1.4 Applications and widgets list	28
2 Text input.....	29
2.1 Using Onscreen Keyboard	29
2.2 Text editing	30
3 Phone call.....	32
3.1 Placing a call.....	32
3.2 Viewing your call history	40
3.3 Contacts	41

4 Messaging, Email	47
4.1 Messaging	47
4.2 Gmail/Email	54
4.3 Hangouts	59
5 Calendar & Alarm clock & Calculator.....	62
5.1 Calendar	62
5.2 Time	64
5.3 Calculator.....	65
6 Getting connected	67
6.1 Connecting to the Internet	67
6.2 Browser	70
6.3 Connecting to Bluetooth devices.....	78
6.4 Connecting to a computer	79
6.5 Sharing your phone's mobile data connection.....	81
6.6 Connecting to virtual private networks.....	82
7 Google Play Store	84
7.1 Locate the item you want to download and install	84
7.2 Download and install.....	85
7.3 Manage your downloads.....	87
8 Multimedia applications	89
8.1 Camera	89
8.2 Gallery	91
8.3 YouTube.....	93
8.4 Music	94
9 Google Maps.....	97
9.1 Get My Location	97
9.2 Search for a location	98
9.3 Star a location	98
9.4 Get driving, public transportation or walking directions.....	100
9.5 Arrangement of Layers	101

10 Others	102
10.1 File Manager	102
10.2 Sound Recorder	102
10.3 Radio	103
10.4 Other applications	104
11 Settings	105
11.1 WIRELESS & NETWORKS.....	105
11.2 DEVICE.....	108
11.3 PERSONAL.....	110
11.4 SYSTEM.....	116
12 Making the most of your phone	119
12.1 Smart Suite	119
12.2 Upgrade.....	120
13 Warranty.....	122
14 Accessories	124
15 Troubleshooting	125
16 Specifications.....	130



www.sar-tick.com

This product meets applicable national SAR limits of 2.0W/kg. The specific maximum SAR values can be found on page 8 of this user guide.

When carrying the product or using it while worn on your body, either use an approved accessory such as a holster or otherwise maintain a distance of 10 mm from the body to ensure compliance with RF exposure requirements. Note that the product may be transmitting even if you are not making a phone call.

Safety and use.....

We recommend that you read this chapter carefully before using your phone. The manufacturer disclaims any liability for damage, which may result as a consequence of improper use or use contrary to the instructions contained herein.

• TRAFFIC SAFETY:

Given that studies show that using a mobile phone while driving a vehicle constitutes a real risk, even when the hands-free kit is used (car kit, headset...), drivers are requested to refrain from using their mobile when the vehicle is not parked.

When driving, do not use your phone and headphone to listen to music or to the radio. Using a headphone can be dangerous and forbidden in some areas.

When switched on, your phone emits electromagnetic waves that can interfere with the vehicle's electronic systems such as ABS anti-lock brakes or airbags. To ensure that there is no problem:

- do not place your phone on top of the dashboard or within an airbag deployment area,
- check with your car dealer or the car manufacturer to make sure that the dashboard is adequately shielded from mobile phone RF energy.

• CONDITIONS OF USE:

You are advised to switch off the telephone from time to time to optimise its performance.

Switch the phone off before boarding an aircraft.

Switch the phone off when you are in health care facilities, except in designated areas. As with many other types of equipment now in regular use, mobile telephones can interfere with other electrical or electronic devices, or equipment using radio frequency.

Switch the phone off when you are near gas or flammable liquids. Strictly obey all signs and instructions posted in a fuel depot, petrol station, or chemical plant, or in any potentially explosive atmosphere.

When the phone is switched on, it should be kept at least 15 cm from any medical device such as a pacemaker, a hearing aid or insulin pump, etc. In particular when using the phone, you should hold it against the ear on the opposite side to the device, if any. To avoid hearing impairment, pick up the call before holding your phone to your ear. Also move the handset away from your ear while using the "hands-free" mode because the amplified volume might cause hearing damage.

Do not let children use the phone and/or play with the telephone and accessories without supervision.

When replacing the cover note that your phone may contain substances that could create an allergic reaction.

Always handle your phone with care and keep it in a clean and dust-free place.

Do not allow your phone to be exposed to adverse weather or environmental conditions (moisture, humidity, rain, infiltration of liquids, dust, sea air, etc). The manufacturer's recommended operating temperature range is -10°C to +55°C. At over 55°C the legibility of the phone's display may be impaired, though this is temporary and not serious.

Emergency call numbers may not be reachable on all cellular networks. You should never rely only on your phone for emergency calls.

Do not open, dismantle or attempt to repair your mobile phone yourself.

Do not drop, throw or bend your mobile phone.

Do not use the phone if the glass made screen, is damaged, cracked or broken to avoid any injury.

Do not paint it.

Use only batteries, battery chargers, and accessories which are recommended by TCL Communication Ltd. and its affiliates and are compatible with your phone model. TCL Communication Ltd. and its affiliates disclaim any liability for damage caused by the use of other chargers or batteries.

Remember to make back-up copies or keep a written record of all important information stored in your phone.

Some people may suffer epileptic seizures or blackouts when exposed to flashing lights, or when playing video games. These seizures or blackouts may occur even if a person never had a previous seizure or blackout. If you have experienced seizures or blackouts, or if you have a family history of such occurrences, consult your doctor before playing video games on your phone or enabling a flashing-lights feature on your phone.

Parents should monitor their children's use of video games or other features that incorporate flashing lights on the phones. All persons should discontinue use and consult a doctor if any of the following symptoms occur: convulsion, eye or muscle twitching, loss of awareness, involuntary movements, or disorientation. To limit the likelihood of such symptoms, take the following safety precautions:

- Do not play or use a flashing-lights feature if you are tired or need sleep.
- Take a minimum of a 15-minute break hourly.
- Play in a room in which all lights are on.
- Play at the farthest distance possible from the screen.
- If your hands, wrists, or arms become tired or sore while playing, stop and rest for several hours before playing again.
- If you continue to have sore hands, wrists, or arms during or after playing, stop the game and see a doctor.

When you play games on your phone, you may experience occasional discomfort in your hands, arms, shoulders, neck, or other parts of your body. Follow the instructions to avoid problems such as tendinitis, carpal tunnel syndrome, or other musculoskeletal disorders.



PROTECT YOUR HEARING

To prevent possible hearing damage, do not listen at high volume levels for long periods. Exercise caution when holding your device near your ear while the loudspeaker is in use.

• PRIVACY:

Note that you must respect the laws and regulations in force in your jurisdiction or other jurisdiction(s) where you will use your mobile phone regarding taking photographs and recording sounds with your mobile telephone. Pursuant to such laws and regulations, it may be strictly forbidden to take photographs and/or to record the voices of other people or any of their personal attributes, and duplicate or distribute them, as this may be considered to be an invasion of privacy. It is the user's sole responsibility to ensure that prior authorisation be obtained, if necessary, in order to record private or confidential conversations or take a photograph of another person; the manufacturer, the seller or vendor of your mobile phone (including the operator) disclaim any liability which may result from the improper use of the mobile phone.

• BATTERY:

Observe the following precautions for battery use:

- Do not attempt to open the battery (due to the risk of toxic fumes and burns).
- Do not puncture, disassemble or cause a short-circuit in a battery.
- Do not burn or dispose of a used battery in household rubbish or store it at temperatures above 60°C.

Batteries must be disposed of in accordance with locally applicable environmental regulations. Only use the battery for the purpose for which it was designed. Never use damaged batteries or those not recommended by TCL Communication Ltd. and/or its affiliates.



This symbol on your telephone, the battery and the accessories means that these products must be taken to collection points at the end of their life:

- Municipal waste disposal centres with specific bins for these items of equipment
- Collection bins at points of sale.

They will then be recycled, preventing substances being disposed of in the environment, so that their components can be reused.

In European Union countries:

These collection points are accessible free of charge.

All products with this sign must be brought to these collection points.

In non European Union jurisdictions:

Items of equipment with this symbol are not to be thrown into ordinary bins if your jurisdiction or your region has suitable recycling and collection facilities; instead they are to be taken to collection points for them to be recycled.

CAUTION: RISK OF EXPLOSION IF BATTERY IS REPLACED BY AN INCORRECT TYPE. DISPOSE OF USED BATTERIES ACCORDING TO THE INSTRUCTIONS.

• CHARGERS

Mains powered chargers will operate within the temperature range of: 0°C to 40°C. The chargers designed for your mobile phone meet with the standard for safety of information technology equipment and office equipment use. They are also compliant to the ecodesign directive 2009/125/EC. Due to different applicable electrical specifications, a charger you purchased in one jurisdiction may not work in another jurisdiction. They should be used for this purpose only.

• RADIO WAVES:

Proof of compliance with international standards (ICNIRP) or with European Directive 1999/5/EC (R&TTE) is required of all mobile phone models before they can be put on the market. The protection of the health and safety for the user and any other person is an essential requirement of these standards or this directive.

THIS DEVICE MEETS INTERNATIONAL GUIDELINES FOR EXPOSURE TO RADIO WAVES

Your mobile device is a radio transmitter and receiver. It is designed not to exceed the limits for exposure to radio waves (radio frequency electromagnetic fields) recommended by international guidelines. The guidelines were developed by an independent scientific organisation (ICNIRP) and include a substantial safety margin designed to assure the safety of all persons, regardless of age and health.

The radio wave exposure guidelines use a unit of measurement known as the Specific Absorption Rate, or SAR. The SAR limit for mobile devices is 2 W/kg.

Tests for SAR are conducted using standard operating positions with the device transmitting at its highest certified power level in all tested frequency bands. The highest SAR values under the ICNIRP guidelines for this device model are:

5015X/5015D:

Maximum SAR for this model and conditions under which it was recorded.		
Head SAR	GSM 900+Wi-Fi	0.404 W/kg
Body-worn SAR	GSM 1800+Wi-Fi	0.682 W/kg

During use, the actual SAR values for this device are usually well below the values stated above. This is because, for purposes of system efficiency and to minimize interference on the network, the operating power of your mobile device is automatically decreased when full power is not needed for the call. The lower the power output of the device, the lower its SAR value.

Body-worn SAR testing has been carried out at a separation distance of 10 mm. To meet RF exposure guidelines during body-worn operation, the device should be positioned at least this distance away from the body.

If you are not using an approved accessory ensure that whatever product is used is free of any metal and that it positions the phone the indicated distance away from the body.

Organisations such as the World Health Organisation and the US Food and Drug Administration have stated that if people are concerned and want to reduce their exposure they could use a hands-free device to keep the phone away from the head and body during phone calls, or reduce the amount of time spent on the phone.

For more information you can go to www.alcatelonetouch.com

Additional information about electromagnetic fields and public health are available on the following site: <http://www.who.int/peh-emf>.

Your telephone is equipped with a built-in antenna. For optimal operation, you should avoid touching it or degrading it.

As mobile devices offer a range of functions, they can be used in positions other than against your ear. In such circumstances the device will be compliant with the guidelines when used with headset or usb data cable. If you are using another accessory ensure that whatever product is used is free of any metal and that it positions the phone at least 10 mm away from the body.

Please note by using the device some of your personal data may be shared with the main device. It is under your own responsibility to protect your own personal data, not to share with it with any unauthorised devices or third party devices connected to yours. For products with Wi-Fi features, only connect to trusted Wi-Fi networks. Also when using your product as a hotspot (where available), use network security. These precautions will help prevent unauthorised access to your device. Your product can store personal information in various locations including a SIM card, memory card, and built-in memory. Be sure to remove or clear all personal information before you recycle, return, or give away your product. Choose your apps and updates carefully, and install from trusted sources only. Some apps can impact your product's performance and/or have access to private information including account details, call data, location details and network resources.

Note that any data shared with TCL Communication Ltd. is stored in accordance with applicable data protection legislation. For these purposes TCL Communication Ltd. implements and maintains appropriate technical and organisation measures to protect all personal data, for example against unauthorised or unlawful processing and accidental loss or destruction of or damage to such personal data whereby the measures shall provide a level of security that is appropriate having regard to

- (i) the technical possibilities available,
- (ii) the costs for implementing the measures,
- (iii) the risks involved with the processing of the personal data, and
- (iv) the sensitivity of the personal data processed.

You can access, review and edit your personal information at any time by logging into your user account, visiting your user profile or by contacting us directly. Should you require us to edit or delete your personal data, we may ask you to provide us with evidence of your identity before we can act on your request.

• LICENCES



microSD Logo is a trademark.



The Bluetooth word mark and logos are owned by the Bluetooth SIG, Inc. and any use of such marks by TCL Communication Ltd. and its affiliates is under license. Other trademarks and trade names are those of their respective owners.

ALCATEL ONETOUCH POP 3 (5) Bluetooth Declaration ID D026888

SwiftKey is a registered trademark of TouchType Ltd.



The HD Voice Logo is owned by the GSM Association ("GSMA" or "Licensor"). It is designed for operators and vendors to market and promote HD Voice capabilities on networks and products.



The Wi-Fi Logo is a certification mark of the Wi-Fi Alliance.

Google, the Google logo, Android, the Android logo, Google Search™, Google Maps™, Gmail™, YouTube, Google Play Store, Google Latitude™ and Hangouts™ are trademarks of Google Inc.

The Android robot is reproduced or modified from work created and shared by Google and used according to terms described in the Creative Commons 3.0 Attribution License (the text will show when you long press **Google legal in Settings>About phone\Legal information**).⁽¹⁾

You have purchased a product which uses the open source (<http://opensource.org/>) programs mtd, msdosfs, netfilter/iptables and initrd in object code and other open source programs licensed under the GNU General Public License and Apache License.

We will provide you with a complete copy of the corresponding source codes upon request within a period of three years from the distribution of the product by TCL. You may download the source codes from <http://sourceforge.net/projects/alcatel/files/>. The provision of the source code is free of charge from internet.

⁽¹⁾ May not be available in all countries.

General information

- **Internet address:** www.alcatelonetouch.com
- **Hot Line Number:** see "TCL Communication Services" leaflet or go to our website.
- **Address:** Room 1910-12A, Tower 3, China HK City, 33 Canton Road, Tsimshatsui, Kowloon, Hong Kong
- **Electronic labeling path:** Touch Settings\Regulatory & safety or press *#07#, you can find more information about labeling ⁽¹⁾.

On our website, you will find our FAQ (Frequently Asked Questions) section. You can also contact us by e-mail to ask any questions you may have.
An electronic version of this user guide is available in English and other languages according to availability on our server: www.alcatelonetouch.com
Your telephone is a transceiver that operates on GSM in quad-band (850/900/1800/1900 MHz) or UMTS in dual-band (900/2100 MHz).

CE | 588

This equipment is in compliance with the essential requirements and other relevant provisions of Directive 1999/5/EC. The entire copy of the Declaration of Conformity for your telephone can be obtained through our website: www.alcatelonetouch.com.

Protection against theft ⁽²⁾

Your telephone is identified by an IMEI (phone serial number) shown on the packaging label and in the phone's memory. We recommend that you note the number the first time you use your telephone by entering *#06# and keep it in a safe place. It may be requested by the police or your operator if your telephone is stolen. This number allows your mobile telephone to be blocked preventing a third person from using it, even with a different SIM card.

Disclaimer

There may be certain differences between the user manual description and the phone's operation, depending on the software release of your telephone or specific operator services.

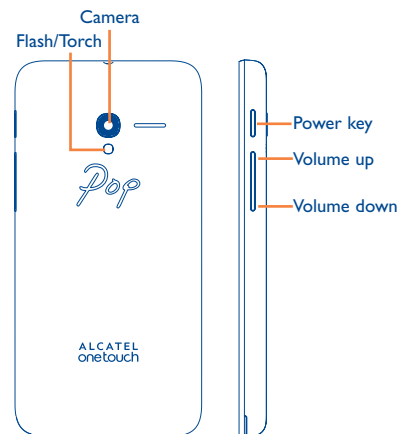
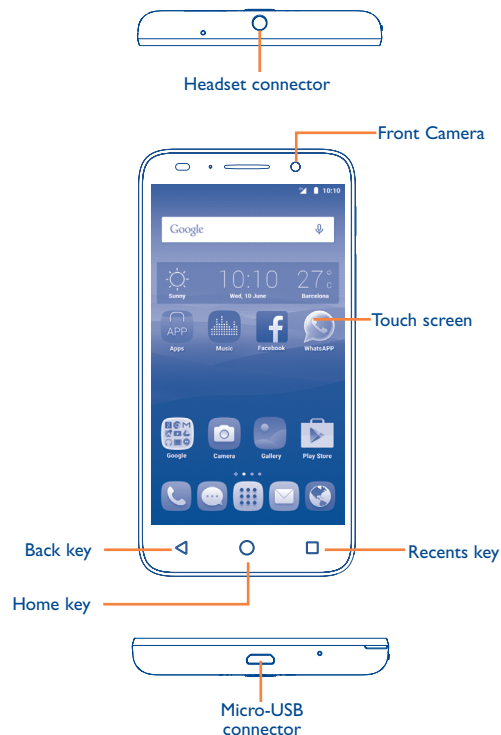
TCL Communication shall not be held legally responsible for such differences, if any, nor for their potential consequences, which responsibility shall be borne by the operator exclusively. This handset may contain materials, including applications and software in executable or source code form, which is submitted by third parties for inclusion in this handset ("Third Party Materials"). All third party materials in this handset are provided "as is", without warranty of any kind, whether express or implied, including the implied warranties of merchantability, fitness for a particular purpose or use/third party application, interoperability with other materials or applications of the purchaser and non-infringement of copyright. The purchaser undertakes that TCL Communication Ltd. has complied with all quality obligations incumbent upon it as a manufacturer of mobile devices and handsets in complying with Intellectual Property rights. TCL Communication will at no stage be responsible for the inability or failure of the Third Party Materials to operate on this handset or in interaction with any other devices of the purchaser. To the maximum extent permitted by law, TCL Communication disclaims all liability for any claims, demands, suits or actions, and more specifically – but not limited to – tort law actions, under any theory of liability, arising out of the use, by whatever means, or attempts to use, such Third Party Materials. Moreover, the present Third Party Materials, which are provided free of charge by TCL Communication, may be subject to paid updates and upgrades in the future; TCL Communication waives any responsibility regarding such additional costs, which shall be borne exclusively by the purchaser. The availability of the applications may vary depending on the countries and the operators where the handset is used; in no event shall the list of possible applications and software provided with the handsets be considered as an undertaking from TCL Communication; it shall remain merely as information for the purchaser. Therefore, TCL Communication shall not be held responsible for the lack of availability of one or more applications wished for by the purchaser, as its availability depends on the country and the operator of the purchaser. TCL Communication reserves the right at any time to add or remove Third Party Materials from its handsets without prior notice; in no event shall TCL Communication be held responsible by the purchaser for any consequences that such removal may have on the purchaser regarding the use or attempt to use such applications and Third Party Materials.

⁽¹⁾ It depends on countries.

⁽²⁾ Contact your network operator to check service availability.

Your mobile.....

1.1 Keys and connectors



Recents key

- **Recent apps.** Touch to open a list of thumbnail images of apps you've worked with recently. Touch it to open an app. Swipe it left or right to remove a thumbnail from the list.



Home key

- From any application or screen, touch to return to the Home screen.
- Long press to open Google search.



Back key

- Touch to go back to the previous screen, or to close a dialog box, options menu, the notification panel, etc.

Power key

- Press: Lock the screen/Light up the screen.
- Press and hold: Show the popup menu to select from **Restart/Power off/Aeroplane mode**.
- Press and hold the **Power** key and **Volume down** key to capture a screenshot.
- Press and hold the power key for at least 10 seconds to force reboot or hold it longer to power off.

Volume Keys

- In call mode, adjusts the earpiece or headset volume.
- In Music/Video/Streaming mode, adjusts the media volume.
- In general mode, adjusts the ringtone volume.
- Mutes the ringtone of an incoming call.

1.2 Getting started

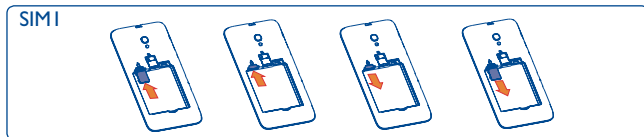
1.2.1 Set up

Removing or installing the back cover

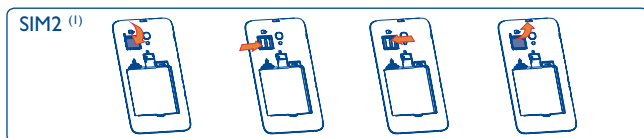


Inserting or removing the SIM card

You must insert your SIM card to make phone calls. Power off your phone before inserting or removing the SIM card.



Place the SIM card with the chip facing downwards and slide it into its housing. Make sure that it is correctly inserted. To remove the card, press and slide it out.



Release the SIM card holder by sliding it in the direction of the arrow and lift it. Insert the SIM card with the gold contacts facing down and make sure the SIM card is put flatly. Lower the SIM card holder and slide it in the opposite direction to lock it.

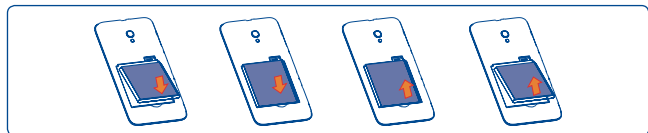
⁽¹⁾ 5015D only.



For dual SIM models, both SIM1 and SIM2 can support 2G and 3G networks. If both of them are 3G SIM cards, only one card can support 3G network ⁽¹⁾. Your phone only supports micro-SIM card. Do not attempt to insert other SIM types like mini and nano cards, otherwise you may damage your phone.

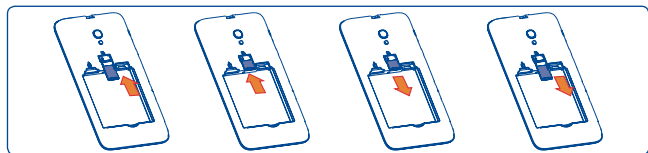
Installing or removing the battery

Power off your phone before removing the battery.



- Insert and click the battery into place, then close the cover.
- Unclip the cover, then remove the battery.

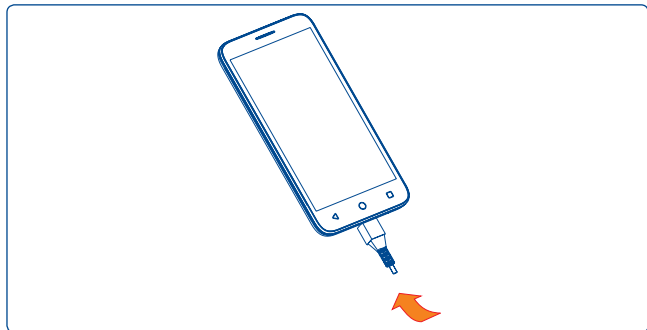
Installing or removing the microSD card



To install, insert the microSD card first, and then place it into the slot with the gold contact facing down. To remove the external microSD card, slide and take it out from the slot.

⁽¹⁾ 5015D only.

Charging the battery



Connect the battery charger to your phone and mains socket respectively.



If the battery is very low, there will be no indication that power is being received until the charge is sufficient to show the charging status bar. To reduce power consumption and energy waste, once the battery is fully charged, disconnect your charger from the plug; switch off Wi-Fi, Bluetooth or background-running applications when not in use; reduce the backlight time, etc.

1.2.2 Power on your phone

Hold down the **Power** key until the phone powers on. It will take a few seconds before the screen lights up.

Set up your phone for the first time

The first time you power on the phone, you should set the following options: language, input method, date & time, Google account, etc.

If you power on your phone with no SIM card inserted, you can connect to a Wi-Fi network to sign into your Google account and to use some features.

For dual SIM mode, you should select a SIM card or choose **Always ask** for voice call, messaging, etc. ⁽¹⁾

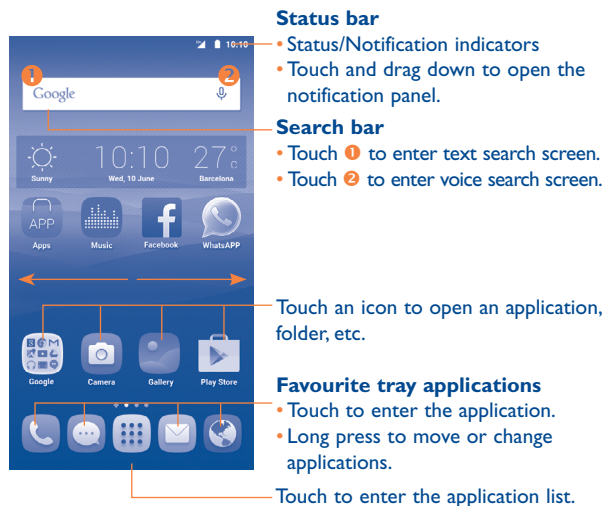
1.2.3 Power off your phone

Hold down the **Power** key until the Phone options appear; select **Power off**.

⁽¹⁾ 5015D only.

1.3 Home screen

You can move all of the items (applications, shortcuts, folders and widgets) you use most frequently to your Home screen for quick access. Touch the Home key to switch to the Home screen.



The Home screen is provided in an extended format to allow more space for adding applications, shortcuts etc. Slide the Home screen horizontally left and right to get a complete view.

1.3.1 Using the touchscreen

Touch



To access an application, touch it with your finger.

Long press



Long press the item to enter the available options.

Drag



Place your finger on the screen to drag an object to another location.

Slide/Swipe



Slide the screen up and down to scroll through the applications, images, web pages, etc.

Flick



Similar to swiping, but flicking makes it move quicker.

Pinch/Spread



Place your fingers of one hand on the screen surface and draw them apart or together to scale an element on the screen.

Rotate



Automatically change the screen orientation from portrait to landscape by turning the phone sideways to have a better view.

1.3.2 Status bar

From the status bar, you can see both phone status (to the right side) and notification information (to the left side).

Status icons

	GPRS connected		Bluetooth is on
	GPRS in use		Connected to a Bluetooth device
	EDGE connected		Speakerphone is on
	EDGE in use		Roaming
	3G connected		Headset connected
	3G in use		No SIM card installed
	HSPA+ connected		Vibrate mode
	HSPA+ in use		Battery is very low
	Signal strength		Battery is low
	Wi-Fi is on		Battery is partially drained
	Connected to a Wi-Fi network		Battery is full
	Aeroplane mode		Battery is charging
	No signal		GPS is on
	Alarm is set		

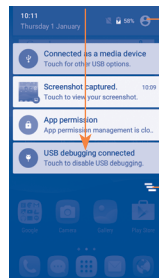
Notification icons

	New Gmail message		Missed call
	New Email message		Call forwarding is on
	New text or multimedia message		Song is playing
	Problem with SMS or MMS delivery		Connected to VPN
	New Google Hangouts message		Radio is on
	New voicemail		Uploading data
	Upcoming event		Download finished
	Screenshot captured		An open Wi-Fi network is available
	Both USB tethering and portable hotspot are on		Phone is connected via USB cable
	USB tethering is on		System update available
	Portable Wi-Fi hotspot is on		Operator data use threshold approaching or exceeded
	More notifications are hidden		

Touch and drag down the Status bar to open the Quick settings panel or Notification panel. Touch and drag up to close it. When there are notifications, you can touch them to access notifications directly.

Notification panel

When there are notifications, touch and drag down the Status bar to open the Notification panel to read more detailed information.



Touch to switch to the Quick settings panel.

Touch to clear all event-based notifications (other ongoing notifications will remain).

Quick settings panel

Touch and drag down the Notification panel or touch to open the Quick settings panel. You can enable or disable functions or change modes by touching the icons.



Touch to enter user screen.

Touch to access **Settings**, where you can set more items.

1.3.3 Lock/Unlock your screen

To protect your phone and privacy, you can lock the phone screen by creating a variety of patterns, PIN or password.

To create a screen unlock pattern (see section "Screen lock" for detailed settings)

- Drag down the Notification panel and touch  to enter Settings, then touch **Security\Screen lock\Pattern**.
- Draw your own pattern.



Pattern recorded!



Draw your unlock pattern



Touch to confirm by drawing pattern again

To create a screen unlock PIN/Password

- Touch **Settings\Security\Screen lock\PIN** or **Password**.
- Set your PIN or password.

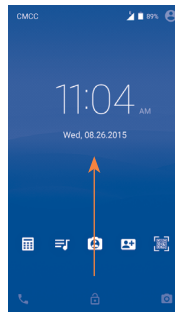
To lock phone screen

Press the **Power** key once to lock the screen.

To unlock phone screen

Press the **Power** key once to light up the screen, draw the unlock pattern you have created or enter your PIN or password to unlock the screen.

If you have chosen **Swipe** as the screen lock, slide the screen up to unlock the screen.



1.3.4 Personalise your Home screen


Add

You can long press a folder, an application, or a widget to activate the Move mode and drag the item to any Home screen you prefer.

Reposition

Long press the item to be repositioned to activate the Move mode, drag the item to the desired position and then release. You can move items both on the Home screen and the Favourite tray. Hold the icon on the left or right edge of the screen to drag the item to another Home screen.

Remove

Long press the item to be removed to activate the Move mode, drag the item up to the top of the  icon, and release after the item turns red.

Create folders

To improve the organisation of items (shortcuts or applications) on the Home screen, you can add them to a folder by stacking one item on top of another. To rename a folder, open it and touch the folder's title bar to input the new name.

Wallpaper customisation

Touch **Settings** on the applications screen then touch **Display\Wallpaper** to customise wallpaper.

I.3.5 Volume adjustment

You can set the ringer, media and phone ringtone volumes to your preference by pressing the **Volume up/down** key, or touching **Settings\Sound & notification\Media volume** to set the volume.

I.3.6 Application tab

Touch  from the Home screen to enter the applications list.

To return to the Home screen, touch the **Home** key.

Consult recently-used applications

To consult recently-used applications, you can long press the **Recents** key. Touch a thumbnail in the window to open the related application. Touch one thumbnail and slide left or right to delete it.

I.4 Applications and widgets list

This list contains all pre-embedded and newly installed applications and widgets.

To open the list, touch  from the Home screen.

To return to the Home screen, touch the **Home** key or the **Back** key.

Slide left and right to see all applications and widgets.

By touching and holding an empty area in the Home screen, you can switch to widget interface mode.

2 Text input

2.1 Using Onscreen Keyboard

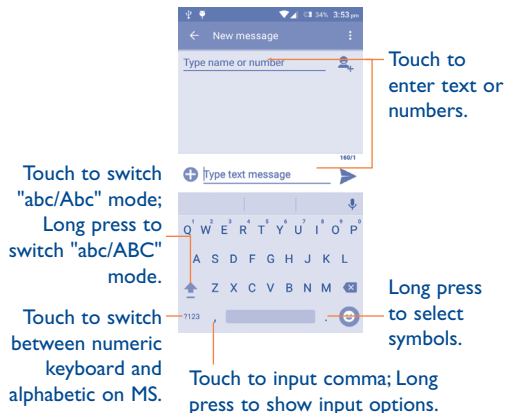
Onscreen Keyboard settings

Touch **Settings**\Language & input, touch the keyboard you want to set up and a series of settings will become available for your selection.

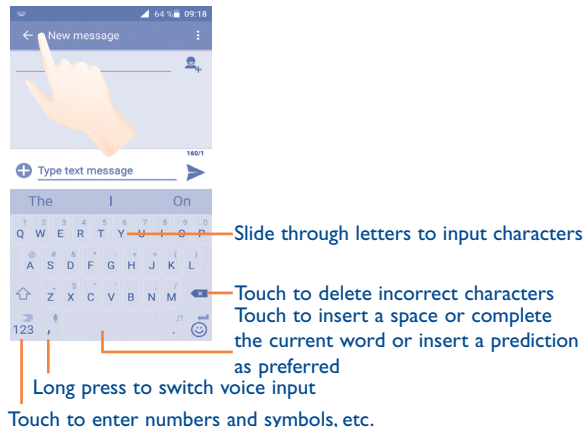
Adjust the Onscreen Keyboard orientation

Turn the phone sideways or upright to adjust the Onscreen Keyboard orientation. You can adjust it by changing the settings (Touch **Settings**\Display\When device is rotated).

2.1.1 Android keyboard








2.1.2 SwiftKey keyboard ⁽¹⁾



2.2 Text editing

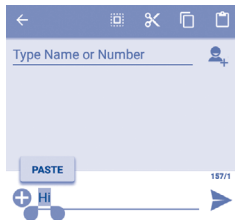
You can edit the text you have entered.

- Long press or double touch the text you would like to edit.
- Drag the tabs to change the highlighted selection.
- The following options will show: **Select all** , **Cut** , **Copy**  and **Paste** .
- Touch the  icon to go back without any action.

⁽¹⁾ It depends on countries.

You can also insert new text

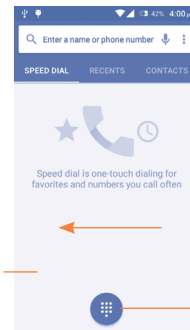
- Touch where you want to type, or long press a blank space, the cursor will blink and the tabs will show. Drag the tab to move the cursor.
- If you have selected any text, touch the tab to show **PASTE** icon which allows you to paste any text you have previously copied.



3 Phone call

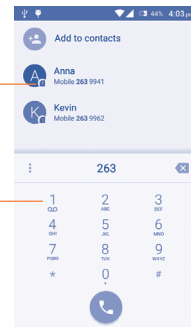
3.1 Placing a call

To make a call when the phone is active, go to the Home screen and touch the Phone icon in the Favourites tray.




Slide to access the
RECENTS and
CONTACTS.


Touch to display
keyboard.



Display the
suggested number(s).

Long press to access
voicemail.

Enter the desired number from the keyboard directly and touch  to place the call or select a contact from **CONTACTS** or **RECENTS** by sliding or touching tabs, then choose your target SIM card to make the call.

The number you entered can be saved to **Contacts** by touching  and then touching **Create new contact**.


If you make a mistake, you can delete the incorrect digits by touching .

To hang up a call, touch .

International call

To dial an international call, long press  to enter "+", then enter the international country prefix followed by the full phone number and finally touch .

Emergency call

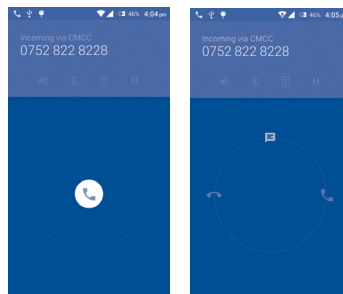
If your phone has network coverage, dial the emergency number and touch  to make an emergency call. This works even without a SIM card and without typing the PIN code.






When making a call with two SIM cards installed, a dialog box will pop up for you to choose the preferred SIM card. The system will choose the default one if the countdown time is over.⁽¹⁾

⁽¹⁾ 5015D only.

3.1.1 Answering or rejecting a call



When you receive a call:

- Slide the  icon to the right to answer;
- Slide the  icon to the left to reject;
- Slide the  icon upwards to reject the call by sending a preset message.

To mute the ringtone volume of an incoming call, press the **Volume up/down** key or turn the phone over (when the **Settings\Gestures\Turn over to mute** option is activated).

3.1.2 Calling your voicemail

Your voicemail is provided by your network to avoid missing calls. It works like an answering machine that you can consult at any time.

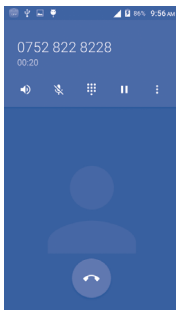
To open your voicemail, long press **1** on the **Phone** tab.

To set your voicemail number, touch **⋮** and touch **Settings\Call Settings\SIM name\Voicemail**.

If you receive a voicemail, a voicemail icon **VO** appears on the Status bar. Open the Notification panel and touch **New Voicemail** to hear it.

3.1.3 During a call

To adjust the volume during a call, press the **Volume up/down** key.



Touch to activate the speaker during the current call. Touch this icon again to deactivate the speaker.



Touch to mute the current call. Touch this icon again to unmute the call.



Touch to display Dial pad.



Touch to hold the current call. Touch this icon again to retrieve the call.



Touch to add a call or start recording.



To avoid accidental touchscreen operations during a call, the screen will be locked automatically when you put the phone close to your ear; it will be unlocked when the phone is taken away from your ear.

3.1.4 Managing multiple calls




With this phone you can handle multiple calls at the same time.

Swap calls

When you accept two calls, you can switch between two lines. The current call is put on hold and you can join the other call.

Conference calls ⁽¹⁾

To set up a conference call:

- Place a call to the first participant of the conference call.
- Touch icon  and select **Add call**.
- Enter the phone number of the person you want to add to the conference and touch . You can also add participants from **Contacts** or **Call log**.
- Touch the  icon and select **Merge calls**.

⁽¹⁾ Depending on your network operator.

3.1.5 Call settings

Touch  and select **Settings** from the Dial screen.

General settings

You can set contact display options, sounds and vibrate, quick responses, etc.

Call settings

Touch your SIM names, the following options are available:

- **Vicemail**

You can set up your voicemail number, select ringtone, etc.

- **Fixed Dialling Numbers**

Fixed Dialling Number (FDN) is a SIM service mode, where outgoing calls are restricted to a set of phone numbers. These numbers are added to the FDN list. The most common practical application of FDN is for parents to restrict the phone numbers which their children can dial.

For security reasons, you'll be prompted to enable FDN by entering SIM PIN2 which is usually acquired from your service provider or SIM maker.

- **Call forwarding**

Touch to configure how your calls are forwarded when you are busy, unanswered or unreachable.

- **Call barring**

You can activate or deactivate call barring for outgoing and incoming calls. The various options are:

All outgoing calls	All outgoing calls are barred.
International outgoing call	Outgoing international calls are barred.
International except home	Outgoing international calls except those to your country of subscription are barred.
All incoming calls	All incoming calls are barred.
Incoming calls while roaming	Incoming calls are barred when you are abroad.
Cancel all	Deactivate all call barring.
Change barring password	Change the original barring password for activating call barring.

- **Additional settings**

Caller ID	Open a dialog box where you can set whether your phone number is displayed when making calls.
Call waiting	Mark the checkbox to notify you of a new incoming call.
Call waiting status	Check the call waiting status of your phone.

Other settings

- **Turn over to mute**

Mark the checkbox to mute incoming calls by turning the phone over.

- **Turn over to reject**

Mark the checkbox to reject incoming calls by turning the phone over.

- **Vibrate reminder**

Mark the check box to vibrate when outgoing calls connect successfully.

- **Noise Reduction**

Mark the checkbox to activate.

3.2 Viewing your call history

You can view your recent call memory by touching the **RECENTS** tab from the Phone screen to see Missed calls, Outgoing calls and Incoming calls.



Incoming calls (green arrows)



Outgoing calls



Missed calls (red arrows)

To view full call history, touch  and choose **Call history**.

Touch a contact or number to see information or further operations.

You can see detailed information of a call, launch a new call or send messages to a contact or number, or add numbers to **Contact** (only available for unsaved phone numbers), etc.

To clear the entire call memory, touch  and **Clear all history**.

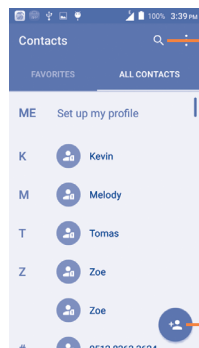
3.3 Contacts.....

The **Contacts** app enables quick and easy access to the people you want to reach.

You can see and create contacts on your phone and synchronise these with your Gmail contacts or other applications on the web or on your phone.

3.3.1 Consult your contacts

To open the **Contacts** app, touch  on the Home screen, then select **Contacts**.



Touch to find contacts in contact list

Touch to add contact

Touch  to display contacts list option menu.

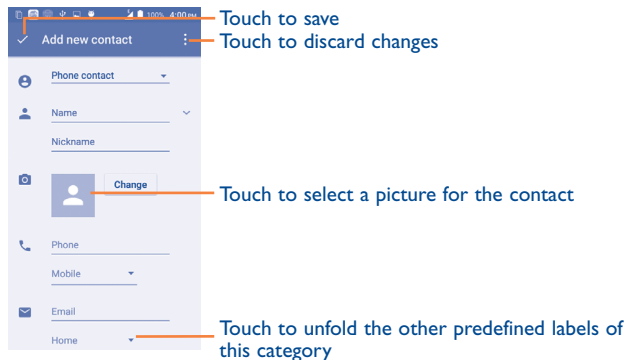
The following actions are enabled:

- **Delete contact** Select and delete unwanted contacts.
- **Contacts to display** Choose contacts to display.
- **Import/Export** Import or export contacts between phone, SIM card, account, phone storage and microSD card, or share contacts.
- **Groups** Manage your contact groups or send group messages, E-mails.
- **Accounts** Manage the synchronisation settings for different accounts.
- **Settings** Open contact display settings.
- **Share visible contacts** Share contacts with others by sending the contact's vCard to them via Bluetooth, Email, SMS, etc.


3.3.2 Adding a contact

Touch the  icon in the contact list to create a new contact.

You'll be asked to enter the contact's name and other contact information. By scrolling up and down the screen, you can move from one field to another easily.



Add to/remove from Favourites

To add a contact to favourites, you can touch a contact to see details then touch  to add the contact to favourites.

To remove a contact from favourites, touch  on contact details screen.



Only phone and account contacts can be added to favourites.

3.3.3 Editing your contacts

To edit contact information, touch  in the contact details screen, when finished, touch .

Change a contact's default phone number


The default phone number (the number which has priority when making a call or sending a message) will always be displayed under the contact name.

To change the default phone number, long press the number you want to set as the default number from the contact's details screen, then select **Set default**.

This choice is only available when the contact has more than one number.

Delete a contact

To delete a contact, touch  and touch **Delete** from the contact (details) screen.

On the contacts list screen, touch  and then **Delete contact**, select the contact(s) you want to remove and touch **Ok** to confirm. Touch **Select all** and then **Ok** to delete all contacts.



The contact you have deleted will also be removed from other applications on the phone or web the next time you synchronise your phone.

3.3.4 Communicating with your contacts

From the contacts details screen, you can communicate with your contacts by making a call or exchanging messages.

To launch a call, touch the  icon on the left side of the number.

To send a message, touch the  icon on the right side of the number.

3.3.5 Contacts importing, exporting and sharing


This phone enables you to import contacts from a SIM card/microSD card and export contacts to a microSD card which can then be used to back up your information.

From the Contacts screen, touch  to open the options menu, touch **Import/Export**, then choose to import/export contacts from/to SIM card, Phone contact, SD card, Phone storage, Accounts, etc.


To import/export a single contact from/to a SIM card, choose an account and target SIM card(s), select the contact you want to import/export, and touch **Ok** to confirm.

To import/export all contacts from/to a SIM card, choose an account and target SIM card(s), touch **Select all** and touch **Ok** to confirm.

You can share a single contact or contacts with others by sending the contact's vCard to them via Bluetooth, Gmail, etc.



Touch a contact you want to share, touch  and **Share** from the contact details screen, then select the application to perform this action.

3.3.6 Displaying contacts

You can configure which group of contacts, for each account, you want to display in the Contacts list. Touch  and then **Contacts to display** from the contacts list screen, then you can choose which contacts to display.

3.3.7 Joining contacts

To avoid duplication, you can add any new contact information to existing contacts in a single action.

Touch the contact which you want to add information to, touch , then touch  in the edit screen and touch **Join**.

Then, you will be required to select the contact whose information you want to join with the first contact. The information from the second contact is added to the first one, and the second contact will no longer be displayed in the Contacts list.


3.3.8 Synchronising contacts in multiple accounts

Contacts, data or other information can be synchronised from multiple accounts, depending on the applications installed on your phone.


To add an account, touch  on the Quick settings bar to get to **Settings**, then touch **Accounts\Add account**.

You'll be asked to select the kind of account you are adding, like Google, Corporate, etc.

As with other account setups, you need to enter detailed information, like username, password, etc.

You can remove an account and all associated information from the phone. Open the **Settings** screen, touch the account you want to delete, touch  and then select **Remove account**, then confirm.

Sync

You can synchronise an account on the **Accounts** screen. Touch an account in the list, then touch  and select **Sync now**.

4 Messaging, Email.....

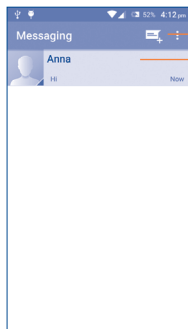
4.1 Messaging.....

You can create, edit and receive SMS and MMS with this mobile phone.

To open your **Messaging**, go to the Home screen and touch the **Messaging** icon in the Favourites tray.

4.1.1 Write message




On the message list screen, touch the new message icon  to write text/multimedia messages.



Touch to create a new message.

- Touch to see the whole message thread.
- Long press to activate delete mode.

Sending a text message

Enter the mobile phone number of the recipient in the **To** bar or touch  to add recipients and touch the **Send message** bar to enter the text of the message. Touch the  icon to insert emotions or icons. When finished, touch  to send the text message.



An SMS of more than 160 characters will be charged as several SMS. Specific letters (accent) will also increase the size of the SMS. This may cause multiple SMS to be sent to your recipient.

Sending a multimedia message

MMS enables you to send video clips, images, photos, animations, slides, and sounds to other compatible phones and email addresses.

An SMS will be converted to MMS automatically when media files (image, video, audio, slides, etc.) are attached or Subject or email addresses added.

Attachment options:


- **Capture picture** Open the Camera to capture a new picture for attaching.
- **Pictures** Open the Gallery or File Manager to select a picture as an attachment.
- **Capture video** Open the Camcorder to record a new video for attaching.
- **Videos** Open the Gallery or File Manager to select a video as an attachment.
- **Record audio** Enter the voice message recorder to record a voice message for attaching.

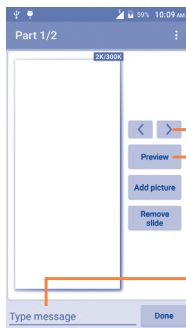
- **Audio**
- **Contact**
- **Calendar**
- **Slideshow**

Open a selection of audio files for attaching.

Open **Contacts** to select one or more contact(s) to attach.

Open **Calendar** to select one event to attach.

Enter the Edit slide show screen, touch **Add slide** to create a new slide, and touch a currently existing slide to edit it (see following picture). Touch  to get more options, like slide duration setting, adding music, etc.




Touch to go to previous or next slide


Touch to preview current slide

Touch to edit the title of this slide

4.1.2 Manage messages

When a new message comes, a  icon will appear on the status bar as a notification. Drag down the status bar to open the Notification panel, touch the new message to open it. You can also open **Messaging** and touch the new message to open it.

Messages are displayed in conversational order.

To reply to a message, touch the current message to enter the message-composing screen, enter the text, then touch .

Long press a message in the message details screen, the following options will be available:

- **Copy** This option is only available for SMS. Touch to copy current message content and paste it to the **Type text message** bar of the new message you are going to compose.
- **Forward** Touch to forward the message to another recipient.
- **Delete** Delete the current message.
- **Lock** Touch to lock the message so it can't/can be deleted if you reach the maximum number of stored messages.
- **Add to Bookmark** To add the current message as a bookmark.
- **View details** Touch to view details of the message.
- **Select text** Touch to select the message text to copy, cut, add to dictionary, etc.
- **Save message to SIM card** This option displays when the message is an SMS. Touch to save the message to the SIM card.

4.1.3 Adjust message settings

In the message list screen, touch  and select **Settings**.

SMS enabled

Touch to change your default SMS APP, Mobile networks, etc.

Text messages (SMS)

- **Delivery reports** Mark to request a delivery report for each text message you send.
- **Manage SIM card messages** Touch to see or manage messages on your SIM card.
- **Edit quick text** Touch to add or edit message templates.
- **SMS service centre** Touch to see or edit your SMS service centre.
- **Validity period** Touch to select your SMS validity period.
- **SMS storage location** Touch to choose either phone or SIM card for storing messages.
- **Alphabet management** Touch to choose Auto format, Super compact or Precise mode for Alphabet management.
- **SMS signature** Mark to enable/disable the SMS signature.

Multimedia messages (MMS)

- **Group messaging** Mark the checkbox to send a single message to multiple recipients.
- **Delivery reports** Select to request a delivery report for each multimedia message you send.
- **Read reports** Select to request a report on whether each recipient has read a multimedia message sent by you.
- **Send read report** Select to request a report on whether the multimedia message has been sent out.

• Auto-retrieve

Select to download full MMS message (including message body and attachment) automatically to your phone. Otherwise, download only the MMS message header.

• Roaming auto-retrieve

Select to download full MMS message (including message body and attachment) automatically when roaming. Otherwise, download only the MMS message header to avoid extra charges.

• Creation mode

Touch to set MMS creation mode when composing messages.

• Maximum message size

Select to edit the message size limit, but it should not be more than 300KB.

• Priority

Set MMS priority as **High**, **Normal** or **Low**.

Notifications

• Notifications

Select to display message notifications in status bar.

• Mute

Select to mute phone notifications when receiving a new message.

• Sound

Touch to select a ringtone as a new message notification tone.

• Popup notification

Select to show popup for push notifications.

General

- **Chat wallpaper** Touch to select wallpaper for message background.
- **Message font size** Touch to select message font size.
- **Show email address** Mark the checkbox to include email address in contact results.
- **Delete old messages** Select to delete old messages when maximum number of stored messages is reached.
- **Text message limit** Touch to set the number of text messages to be saved per conversation.
- **Multimedia message limit** Touch to set the number of multimedia messages to be saved per conversation.
- **Enable CB ringtone** Mark the checkbox to enable cell broadcast ringtone.
- **Select CB ringtone** Touch to select a ringtone for cell broadcast.
- **Cell Broadcast** Touch to enable or disable cell broadcast service or to choose its language and channel.
- **Enable WAP PUSH** Mark/Unmark the checkbox to allow or block WAP PUSH.

4.2 Gmail/Email

The first time you set up your phone, you can select to use an existing Gmail account or to create a new Email account.






4.2.1 Gmail


As Google's web-based email service, Gmail is configured when you first set up your phone. Gmail on your phone can be automatically synchronised with your Gmail account on the web. Unlike other kinds of email account, each message and its replies in Gmail are grouped in your inbox as a single conversation; all emails are organised by labels instead of folders.

To open Gmail

Gmail displays messages and conversations from one single Gmail account. Enter your account and the password to open Gmail.


To create and send emails

- Touch the  icon from the Inbox screen.
- Enter recipient(s)'s email address in the **To** field, and if necessary, touch  and select **Cc/Bcc** to add a copy or a blind copy to the message.
- Enter the subject and the content of the message.
- Touch  and select **Attach file** to add an attachment.
- Finally, touch the  icon to send.
- If you do not want to send the mail out right away, you can touch  and then **Save draft** or touch the **Back** key to save a copy. To see the draft, touch your account name to display all labels, then select **Drafts**.

If you do not want to send or save the mail, you can touch  and then touch **Discard**.



To add a signature to emails, touch  and then touch **Settings** from the inbox screen, choose an account, then touch **Signature**.

To receive and read your emails




When a new email arrives, you will be notified by a ringtone or vibration, and a  icon will appear on the Status bar.

Touch and drag down the Status bar to display the Notification panel, touch the new email to see it. Or you can also open the Gmail Inbox label and touch the new mail to read it.

You can search for an email by sender, recipient, subject, etc.

- Touch  from the Inbox screen.
- Enter the keyword you want to search for in the search box and touch  on the software keyboard.

To reply or forward emails

- **Reply** When seeing an email, touch  to reply to this mail.
- **Reply all** Touch  and select **Reply all** to send messages to all people in a mail loop.
- **Forward** Touch  and select **Forward** to forward the received mail to other people.

Managing Gmails by Labels




To conveniently manage conversations and messages, you can organise them using a Label.

To label a conversation when reading a conversation's messages, touch  and **Change labels** to assign a label for the conversation.

To see conversations by labels when seeing your inbox or another conversation list, touch your account name, then touch a label to see a list of conversations within that label.

To manage labels, touch  and **Settings**, then touch your account and select **Manage labels**.

Long press a message thread to display the following options:

-  Touch to delete the email message.
-  Touch to mark an email message as read or unread.
-  Touch to open further options, like: **Move to**, **Add star**, etc.

Gmail settings

To manage Gmail settings, touch  and select **Settings** in the Inbox screen.

General settings

- **Gmail default action** Touch to show **Archive** or to **Delete**.
- **Swipe actions** Mark the checkbox to swipe left or right when seeing conversations.
- **Sender image** Mark the checkbox to display a photo beside the name in the conversation list.

- **Reply all** Touch to mark the checkbox to make this default response to messages.
- **Auto-fit messages** Touch to mark the checkbox to zoom in/out of the message, so that it fits on the screen.
- **Auto-advance** Touch to select which screen to show after you delete or archive a conversation.
- **Confirm before deleting** Mark the checkbox to request confirmation before deleting emails.
- **Confirm before archiving** Mark the checkbox to request confirmation before archiving emails.
- **Confirm before sending** Mark the checkbox to request confirmation before sending emails.

After touching an account, the following settings will appear:

- **Signature** To add a signature text to the end of each mail you send.
- **Images** Touch to select images Always show or Ask before showing.
- **Sync frequency** Touch to set the sync frequency.
- **Download attachments** Mark the checkbox to auto-download attachments to recent messages via Wi-Fi.
- **Email notifications** Mark the checkbox to activate notification when a new email arrives.
- **Choose ringtone/vibrate** Touch to set Ringtone or vibration for Gmail notifications.

4.2.2 Email




Besides your Gmail account, you can also set up external POP3 or IMAP email accounts in your phone.






To open Email, go to the Home screen and touch the Email icon in the Favourites tray.

An email setup wizard will guide you through the steps to set up an email account.

- Enter the email address and password of the account you want to set up.

- Touch **NEXT**. If the account you entered is not provided by your service provider in the phone, you will be prompted to go to the email account settings screen to enter settings manually. Alternatively, you can touch **Manual setup** to directly enter the incoming and outgoing settings for the email account you are setting up.
- Enter the account name and display name in outgoing emails.
- To add another email account, you can touch the  icon and **Settings**. Touch **Add account** to create.

To create and send emails

- Touch the  icon from the Inbox screen.
- Enter recipient(s) email address (es) in the **To** field.
- If necessary, touch the  icon beside **To** field to add **Cc/Bcc** to add a copy or a blind carbon copy to the message.
- Enter the subject and the content of the message.
- Touch  to add an attachment.
- Finally, touch  to send.
- If you do not want to send the mail right away, you can touch the  icon and **Save draft** keys or touch the **Back** key to save a copy.


4.3 Hangouts.....



Google's instant messaging service, Google Hangouts, lets you communicate with your friends whenever they are connected to this service.

To open this feature and sign in, touch the Application tab from the Home screen, then touch **Hangouts**. All friends added by using Google Hangouts from the web or phone will be displayed in your friends list.

4.3.1 Chatting with your friends

To start a chat, touch the name of a friend in your Friends list, then enter your message and finally touch .

4.3.2 To add a new friend

From the Friends list, touch the icon to add a new friend.

Enter the name, email, number or Circle of the friend you want to add, and if the friend is not yet on Hangouts, the system will require you to send an invite by telling the friend via SMS or Gmail. A notification with this invitation will be showed in your friend's messaging or Gmail.

If your friends invite you to a video talk or if they send you a message for the first time, you can select Decline or Reply in response.

4.3.3 To start and close a chat

Touch one friend from the friends list, you could send messages to your friends or have a video call;

After you join Google+, you could send pictures to everyone in Google Hangouts.

When you want to end a chat, touch the back key from the Chatting screen directly.

4.3.4 To manage your friends

Besides adding new friends to your friends list, the following actions are available for your choice:

- **To view all friends** By default, all your friends are displayed in the Friends list. Touch your friend to start the conversation directly. Long press the friend to activate archive and delete.

4.3.5 Settings

A series of settings are available for your selection by touching **Settings** from Friends list screen, and choose an account.

- **Profile photo** Touch to set or change your Google + profile photo.
- **Share your status** Your status is visible to everyone you use Hangouts with.
- **Hangouts message& invitations** Touch to set the Hangouts message notifications, sound and vibrate.
- **Join Google+** Touch to join Google+ to get more.
- **Confirm phone number** Touch to confirm phone number to help people find you and see your Google account name on Hangouts.
- **Blocked people** Touch to view block people.
- **Hidden contacts** Touch to view hidden contacts.
- **Sign out** Touch to remove your accounts.
- **Improve Hangouts** Mark the checkbox to activate improving Hangouts.

5 Calendar & Alarm clock & Calculator.....

5.1 Calendar 26

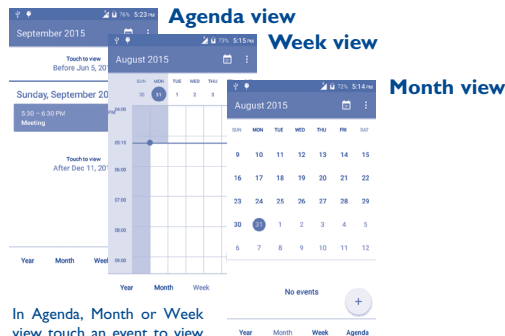
Use the Calendar to keep track of important meetings, appointments, etc.

To open it, touch the Application tab from the Home screen, then touch **Calendar**.

5.1.1 Multimode view

You can display the Calendar in daily, weekly, monthly, or agenda view.

To change your Calendar view, touch the date title at the bottom to choose your options.





In Agenda, Month or Week view touch an event to view its details.




Touch a day in Month view to open that day's events.

5.1.2 To create new events


You can add new events from any Calendar view.

- Touch the  icon to open the new event edit screen.
- Fill in all required information for this new event. If it is a whole-day event, you can select **ALL DAY**.
- Invite guests to the event. Enter the email addresses of the guests you want to invite with commas to separate. The guests will receive an invitation from Calendar and Email.
- When finished, touch  from the top of the screen.

5.1.3 To delete or edit an event

To share, delete or edit an event, touch the event to enter the details screen, touch the  icon to share the event with other people by Bluetooth, Email and Messaging, etc., touch the  icon to edit the event, and touch the  icon to delete.

5.1.4 Event reminder

If a reminder is set for an event, the upcoming event icon  will appear on the Status bar as a notification when the reminder time arrives.

Touch and drag down the status bar to open the Notification panel, touch the event name to see the Calendar notification list.

Touch **Snooze** to turn off all event reminders for 5 minutes.

Touch the **Back** key to keep the reminders pending in the status bar and the Notification panel.

Important options activated by touching  from the Calendar main screen:

- **Refresh** To refresh the calendar.
- **Search** To search in the calendar
- **Go to** Select to go to a specific date.
- **Calendars to display** To show or hide, remove or add calendars.
- **Settings** To set a series of Calendar settings.

5.2 Time.....




Time application includes four applications – **Alarm**, **World clock**, **Timer** and **Countdown**.

Touch  **Alarm** to add or set an alarm.

5.2.1 To set an alarm

From the **Time** screen, touch  to enter the **Alarm** screen, touch  to add a new alarm.

5.2.2 To adjust alarm settings

Touch  from the **Alarm** screen and enter **Settings**. The following options will be available:

- **Silence after** Select the alarm ring duration.
- **Snooze length** Touch to set up the length of snooze.
- **Alarm volume** Adjust the alarm volume.
- **Volume buttons** Touch to set the alarm sounds: **Snooze**, **Dismiss** or **Do nothing**.
- **Turn over to activate** Touch to select the turn over behaviour: **Snooze** or **Dismiss**.

5.3 Calculator.....



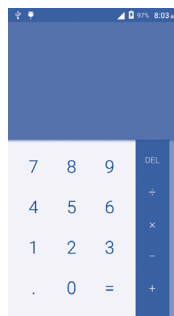
With the Calculator, you can solve many mathematical problems.

To open it, touch the Application tab from the Home screen, then touch **Calculator**.

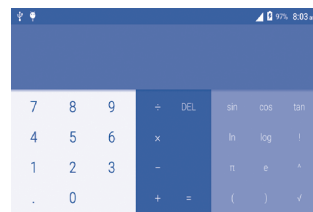
There are two panels available: Basic calculator and Scientific calculator.

To switch between panels, rotate screen automatically.

Basic calculator



Scientific calculator



Enter a number and the arithmetic operation to be performed, enter the second number, then touch "=" to display the result. Touch **DEL** to delete digits one by one, long press **DEL** to delete all at one time.

6 Getting connected.....

To connect to the internet with this phone, you can use GPRS/EDGE/3G networks or Wi-Fi, whichever is most convenient.

6.1 Connecting to the Internet




6.1.1 GPRS/EDGE/3G

The first time you turn on your phone with your SIM card inserted, it will automatically configure your network service: GPRS, EDGE, 3G.

To check the network connection you are using, touch the Application tab on the Home screen, then touch **Settings\More...\Mobile networks\Access Point Names** or **Network operators**.



To create a new access point

A new GPRS/EDGE/3G network connection can be added to your phone with the following steps:

- Touch  on the Quick setting bar to get to **Settings**.
- Touch **More...\Mobile networks\Access Point Names**
- Then touch  and select **New APN**.
- Enter the required APN information.
- When finished, touch  and **Save**.

To activate/deactivate Data roaming


When roaming, you can decide to connect/disconnect a data service.

- Touch  on the Quick settings bar to get to **Settings**.
- Touch **Settings\More...\Mobile networks\Data roaming**.
- Touch  to activate/deactivate Data roaming.
- When Data roaming is deactivated, you can still perform data exchange with a Wi-Fi connection (see "6.1.2 Wi-Fi").

6.1.2 Wi-Fi




Using Wi-Fi, you can connect to the Internet when your phone is within range of a wireless network. Wi-Fi can be used on your phone even without a SIM card inserted.

To turn Wi-Fi on and connect to a wireless network

- Touch **Settings\Wi-Fi**.
- Touch the switch  to turn on/off Wi-Fi.
- The detailed information of detected Wi-Fi networks is displayed in the Wi-Fi networks section.
- Touch a Wi-Fi network to connect with. If the network you selected is secured, you'll be asked to enter a password or other credentials (contact your network operator for details). When finished, touch **Connect**.



To activate notification when a new network is detected

When Wi-Fi is on and the network notification is activated, the Wi-Fi icon will appear on the status bar whenever the phone detects an available wireless network within range. The following steps activate the notification function when Wi-Fi is on:

- Touch  on the Quick settings bar to get to **Settings**.
- Touch **Wi-Fi**, then touch  and select **Advanced**.
- Touch  to activate/deactivate this function.

To add a Wi-Fi network

When Wi-Fi is on, you may add new Wi-Fi networks according to your preference.

- Touch  on the Quick settings bar to get to **Settings**.
- Touch **Wi-Fi**, and then touch  and select **Add network**.
- Enter the name of the network and any required network information.
- Touch **Save**.

When successfully connected, your phone will be connected automatically the next time you are within range of this network.

To forget a Wi-Fi network

The following steps prevent automatic connections to networks which you no longer wish to use.

- Turn on Wi-Fi, if it's not already on.
- In the Wi-Fi screen, long press the name of the saved network.
- Touch **Forget network** in the dialog that opens.

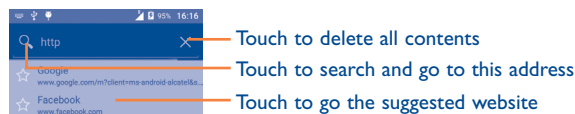
6.2 Browser.....

Using the Browser, you can enjoy surfing the Web.

To get onto the Web, go to the Home screen and touch the **Browser** icon in the Favourites tray.


To go to a web page

On the Browser screen, touch the URL bar at the top and enter the address of the web page by touching .



The URL bar will hide after a few seconds. To show the URL bar, you can touch and slide down the screen.


To set a home page

- Touch  from the Browser screen to display the option menu, touch **Settings\General\Set homepage**.
- Choose a page or most visited website as your home page.
- If you choose **Other**, enter the URL of the website you want to set as your home page, touch **OK** to confirm.

6.2.1 Seeing web pages




After opening a website, you can navigate on web pages by sliding your finger on the screen in any direction to locate the information you want to see.

To find text on a web page

- Touch  from the web page screen, then touch **Find on page**.
- Enter the text or phrase you want to find.
- The first word with matching characters will be highlighted on the screen, and subsequent matches will be boxed.
- Touch the up or down arrow to switch to the previous or next matching items.
- When finished, you can touch the **Back** key to close the search bar.




Further operations for the text on a web page

You can copy, share or search the text on a web page:

- Long press the text to highlight it.
- Move the two tabs to select the text. Or touch  **SELECT ALL** to select all words in this web page.
- Long press the selected text,  **Copy**,  **Share**, and etc. will appear on the screen.
- When finished, touch the **Back** key to deactivate the mode.

To open new window/switch between windows

Multiple windows can be opened at the same time for your convenience.

- Touch  to open all windows' thumbnails.
- Slide up and down to see all windows, touch one to see it.
- Touch  to open a new window.
- To close a window, touch  on the window you want to close or slide it sideways.

Other options:


- **Refresh** To refresh the current page.
- **Stop** To stop opening the current page.
- **Home** To get back to the home page you set.
- **Save to bookmarks** To add the current website page as a bookmark.
- **Close** To minimise or quit.
- **Share page** To share the current page with your friends via various ways, like Message, Email, Bluetooth, etc.
- **Find on page** To input contents you want to find on the current page.
- **Request desktop site** To enable/disable computer versions of websites.
- **Bookmarks/History** To see your bookmarks and browsing history.
- **Settings** To open a series of Browser settings.
- **Version** To see the version of your browser.

6.2.2 Manage links, history, downloads

To manage a link, phone number or address displayed on a web page


- **Link** Touch the link to open the web page.
Long press the link to open options for further operation, like opening in new window, saving link, copying link URL, etc.
- **Phone number** Touch to call the phone number.
- **Address** Touch to open Google Maps and locate the address.

To see Browser history



- Touch  from the Browser screen.
- Touch **Bookmarks/History**.
- Touch the **History** tab to see browser history.
- Touch **Saved pages** to see the pages you've saved.

Manage bookmarks

To bookmark a web page

- Open the web page you want to bookmark.
- Touch  and touch **Save to bookmarks**, or from the **History** screen, touch the star beside the URL.
- Enter the Label and Address if needed and touch **OK** to confirm.

To open a bookmark

- Touch  and touch **Bookmarks/History**, or touch the  icon to enter the **Bookmarks** screen.
- Touch the bookmark you want to open.

Long press a bookmark in the bookmark list to see additional options:

- **Edit bookmark** To edit the bookmark.
- **Add a shortcut to Home** To add a bookmark shortcut to the Home screen.
- **Share link** To share the bookmark.
- **Copy link URL** To copy the bookmark link.
- **Delete bookmark** To delete the bookmark.
- **Set as home page** To set this page as the home page.

6.2.3 Settings

A series of settings are available for your adjustment. To open the Browser settings, touch the **Menu** key from the Browser screen, and touch **Settings**.

General

- **Set home page** Touch to set your home page.

Privacy & security

- **Clear cache** Touch to clear locally cached content and databases.
- **Clear history** Touch to clear the browser history.
- **Show security warnings** Mark to show a warning if there is a problem with a site's security.
- **Accept cookies** Mark to allow sites to save and read cookie data.
- **Clear all cookie data** Touch to clear all browser cookies.
- **Remember form data** Mark to remember data in forms for later use.
- **Clear form data** Touch to clear all saved form data.
- **Enable location** Mark to allow sites to request access to your location.
- **Clear location access** Touch to clear location access for all websites.

Accessibility

- **Preview** See the text scaling, zoom, and font size.
- **Text scaling** Slide to change the size of the text display.
- **Zoom on double tap** Slide to change the magnification level when double touch the page.
- **Minimum font size** Slide to change the minimum font size.

Advanced

- **Set search engine** Touch to select a search engine.
- **Open in background** Mark to open new windows behind the current one.
- **Enable JavaScript** Mark to enable JavaScript.
- **Allow multiple tabs per app** Mark to allow one app to use multiple tabs.
- **Website settings** Touch to see advanced settings for individual websites.
- **Open pages in overview** Mark the checkbox to open web pages zoomed out, in an overview.
- **Auto-fit pages** Mark to format web pages to fit the screen.
- **Block popup windows** Mark the checkbox to prevent popup windows.
- **Text encoding** Touch to select the character-encoding standard.
- **Reset to default** Touch to clear all browser data and to reset all settings to default.

Bandwidth management


- **Search result preloading** Touch to enable/disable browser to preload search results in the background.
- **Web page preloading** Touch to enable/disable browser to preload the linked web pages in the background.
- **Load images** Mark to display images on web pages.

Labs



- **Quick controls** Mark to enable quick controls.
- **Full screen** Mark to use the full screen mode.

6.3 Connecting to Bluetooth devices ⁽¹⁾



Bluetooth is a short-range wireless communication technology that you can use to exchange data, or connect to other Bluetooth devices for various uses.

To open it, touch  on the Quick settings bar to get to **Settings**, then touch **Bluetooth**. Your device and other available ones will show on the screen.

To turn on Bluetooth

- Touch  on the Quick settings bar to get to **Settings**.
- Touch  to activate/deactivate this function.


To make your phone more recognisable, you can change your phone name which is visible to others.

- Touch  on the Quick settings bar to get to **Settings**.
- Touch **Bluetooth**.
- Touch  and select **Rename this device**.
- Enter a name, and touch **Rename** to confirm.


⁽¹⁾ You are recommended to use ALCATEL ONE TOUCH Bluetooth headsets, which have been tested and proved compatible with your phone. You can go to www.alcatelonetouch.com for more information about the ALCATEL ONE TOUCH Bluetooth headset.

To pair/connect your phone with a Bluetooth device

To exchange data with another device, you need to turn Bluetooth on and pair your phone with the Bluetooth device with which you want to exchange data.

- Touch  on the Quick settings bar to get to **Settings**.
- Touch **Bluetooth** and turn it on.
- Touch a Bluetooth device you want to be paired with in the list.
- A dialog will pop up, touch **Pair** to confirm.
- If the pairing is successful, your phone will connect with the device.

To disconnect/unpair from a Bluetooth device

- Touch the Settings icon  beside the device you want to unpair.
- Touch **Forget** to confirm.

6.4 Connecting to a computer

With the USB cable, you can transfer media files and other files between microSD card/internal storage and a computer.

Before using MTP or PTP, first mark **USB debugging**.

- To open it, touch **Settings>About phone**, then touch **Build number** 7 times. Then touch **Settings\Developer options\USB debugging**.

To connect your phone to/from the computer:

- Use the USB cable that came with your phone to connect the phone to a USB port on your computer. You will receive a notification that the USB is connected.
- If you use MTP or PTP, your phone will be automatically connected.




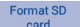
For Windows XP or lower operating systems, you should download and install Windows Media Player 11 on your computer from the following link: <http://windows.microsoft.com/en-us/windows/windows-media-player>.

To locate the data you have transferred or downloaded to the internal storage:

- Touch the Application tab from the Home screen to open the applications list.
- Touch **File Manager**.

All data you have downloaded is stored in **File Manager**, where you can see media files (videos, photos, music and others), rename files, install applications on your phone, etc.

To format a microSD card

- Touch  on the Quick settings bar to get to **Settings**.
- Touch **Storage**.
- Touch **Format SD card**, a popup message appears to warn you that formatting the microSD card will erase its contents.
- Touch  to confirm.

6.5 Sharing your phone's mobile data connection

You can share your phone's mobile data connection with a single computer via USB cable (USB tethering) or with up to eight devices at once by turning your phone into a portable Wi-Fi hotspot.

To turn on USB tethering or Wi-Fi hotspot


- Touch **Settings**\More...\Tethering & portable hotspot.
- Touch the switch  of **USB tethering** or **Wi-Fi hotspot** to activate this function.



These functions may incur additional network charges from your network operator. Extra fees may also be charged in roaming areas. You can check data usage by touching **Settings**\Data usage.

To rename or secure your portable hotspot



When Portable Wi-Fi hotspot is activated, you can change the name of your phone's Wi-Fi network (SSID) and secure its Wi-Fi network.

- Drag down the Notification panel and touch  to open **Settings**.
- Touch **More...**\Tethering & portable hotspot\Wi-Fi hotspot.
- Touch **Set up Wi-Fi hotspot** to change the network SSID or set your network security.
- Touch **Save**.

6.6 Connecting to virtual private networks

Virtual private networks (VPNs) allow you to connect to the resources inside a secured local network from outside that network. VPNs are commonly deployed by corporations, schools, and other institutions so that their users can open local network resources when not inside that network, or when connected to a wireless network.

To add a VPN

- Touch  on the Quick settings bar to get to **Settings**.
- Touch **More...**\VPN and then touch .
- In the screen that opens, follow the instructions from your network administrator to configure each component of the VPN settings.
- Touch **Save**.


The VPN is added to the list on the VPN settings screen.



Before adding a VPN, you should set a lock screen pattern, PIN code or password for your phone.

To connect/disconnect to a VPN

To connect to a VPN:


- Touch  on the Quick settings bar to get to **Settings**.
- Touch **More...|VPN**.
- VPNs you have added are listed; touch the VPN you want to connect with.
- In the dialog that opens, enter any requested credentials and touch **Connect**.

To disconnect:

- Open the Notification panel and touch the resulting notification for VPN disconnection.

To edit/delete a VPN

To edit a VPN:

- Touch  on the Quick settings bar to get to **Settings**.
- Touch **More...|VPN**.
- VPNs you have added are listed; long press the VPN you want to edit.
- Touch **Edit profile**.
- After finishing, touch **Save**.

To delete:


- Long press the VPN you want to delete, in the dialog that opens, touch **Delete profile**.

7 Google Play Store ⁽¹⁾.....

Google Play Store is an online software store, where you can download and install applications and games on your Android powered phone.

To open Google Play Store:

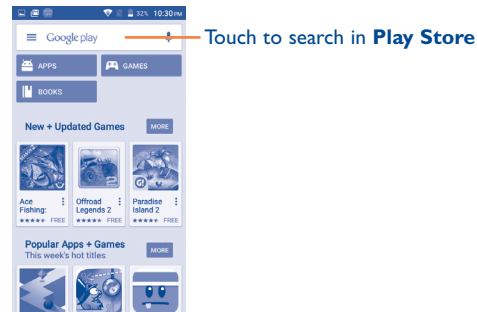
- Touch **Play Store** from the Home screen.
- The first time you open Google Play Store, a screen with Terms of Service pops up for your attention, touch **Accept** to continue.

Touch  and then select **Help** to enter the Google Play Store help page for more information on this function.

7.1 Locate the item you want to download and install

Google Play Store home page provides several ways to find applications. It showcases applications and games in categorised listings.

Touch the top left corner and select **My apps** to see all your downloads.




⁽¹⁾ Depending on your country and operator.

Touch a category to browse its contents. You can also select a subcategory if there is one. Within each category you can select to see items sorted by Top free, Top new free, Trending, etc.

Touch the Google Play Store icon  on the top left of the screen or touch **Back** key to return to the previous screen.

7.2 Download and install

To download and install:

- Navigate to the item you want to download, and enter the details screen from which you can read its description, overall rating or comments, see developer's information, etc.
- Touch **INSTALL** to preview the functions and data the application can access on your phone if you install it.
- Touch **ACCEPT** to download.
- The progress of the download will show on the details screen, touch **X** to stop downloading the item. You can also open this screen through the Notification panel.
- After download and installation have finished, you will see a notification icon  on the status bar.



Be especially cautious with applications that have access to many functions or to a significant amount of your data. Once you accept, you are responsible for the results of using this item on your phone.

To open the application you have downloaded:

- Touch the top left corner and select **My apps**.
- Touch the installed application in the list, then touch **OPEN**.

To buy an application ⁽¹⁾

On **Google Play Store**, some applications are labelled as free, while some of them are to be paid for before downloading and installing.


- Touch the application you want to buy.
- Touch the price to preview the functions and data the application can open on your phone if you install it.
- Touch **Continue** to confirm.
- When making your first purchase, you'll be asked to input your credit card information and to log into the Google payment and billing service.
- If your account has multiple credit card accounts, select one to proceed.
- Select the Terms of Service link and read the document. When finished, touch the **Back** key.
- Mark the checkbox if you agree with the Terms of Service.
- Touch **Buy now** at the bottom of the screen.

When finished, Android downloads the application.

⁽¹⁾ Google Paid applications may not be available to users in some countries.

To request a refund

If you are not satisfied with the application, you can ask for a refund within 15 minutes of the purchase. Your credit card will not be charged and the application will be removed. If you change your mind, you can install the application again, but you will not be able to request a refund.

- Touch  and touch **My apps** from the Google Play Store Apps screen.
- Touch the application that you want to uninstall and refund.
- Touch **REFUND** to uninstall the application and receive a refund. If the button becomes **UNINSTALL**, your trial period has expired.
- In the survey form, select the answer that best matches your reason, and touch **OK**.

7.3 Manage your downloads

After you have downloaded and installed an application, the following further operations are available for your selection.

View

On the Google Play Store Apps screen, touch the top left corner and touch **My apps**.


Uninstall

On the Google Play Store Apps screen, touch the top left corner and touch **My apps**. Touch the application you want to uninstall to enter the details screen, touch **UNINSTALL**, and finally touch **OK** to confirm.


Refund


On the Google Play Store Apps screen, touch the top left corner and touch **My apps**. Touch the application you want to uninstall for a refund, touch **REFUND**, and finally touch **OK** to confirm.

Update notification


On the Google Play Store Apps screen, touch  and touch **Settings\ Notifications** to enable update notification.

Auto-update

To auto-update all installed applications, touch  from the **My apps** screen, and then touch **Settings\Auto-update apps** to enable this function.

To auto-update one specific application, touch  and mark the checkbox of **Auto-update** from the app details screen.

Rate and review

Open the details screen for an application, touch the stars  besides **Rate & review** to award and input comments, touch **OK** to confirm.

Flag

You can report an inappropriate application to Google Play Store by flagging it. Open the details screen for the application, scroll to the bottom and touch **Flag as inappropriate**, enter the reason and finally touch **Submit**.

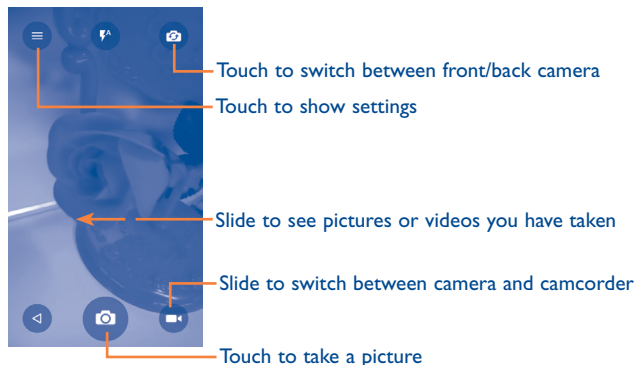
8 Multimedia applications.....

8.1 Camera


Your mobile phone is fitted with a Camera for taking photos and shooting videos.

Before using the Camera, be sure to remove the protective lens cover to avoid it affecting your picture quality.

To take a photo when your phone is active, touch the **Camera** icon on your Home screen.




To take a picture

The screen acts as the viewfinder. First position the object or landscape in the viewfinder; touch the  icon to take the picture which will then be automatically saved.

To shoot a video

First position the object or landscape in the viewfinder; and touch the  icon to start recording. Touch  to pause recording, touch  or press the Back key to save the video.

8.1.1 Settings in framing mode

Before taking a photo/shooting a video, touch the  icon to adjust a number of settings in framing mode.

Back camera shooting mode

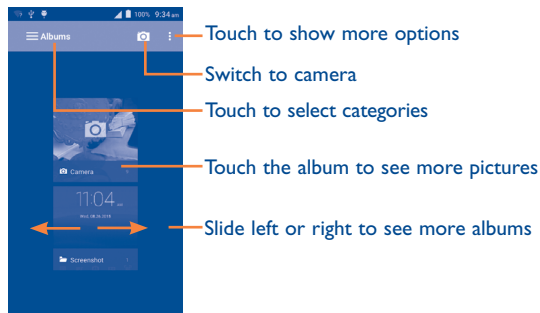
- **HDR** Touch to turn on the HDR (High-Dynamic Range) function. HDR photos can better reflect the visual effects people have in the real environment by synthesizing.
- **Panorama** Touch to switch to panorama mode.
- **Night** Touch to switch to night mode.
- **Scanner** Touch to scan the QR code.
- **Face Beauty** Touch to switch to face beauty mode.



8.2 Gallery



The Gallery acts as a media player for you to see photos and playback videos. In addition, a set of further operations to pictures and videos are available for your choice.





To see a picture/play a video


Pictures and videos are displayed by albums in the **Gallery**.

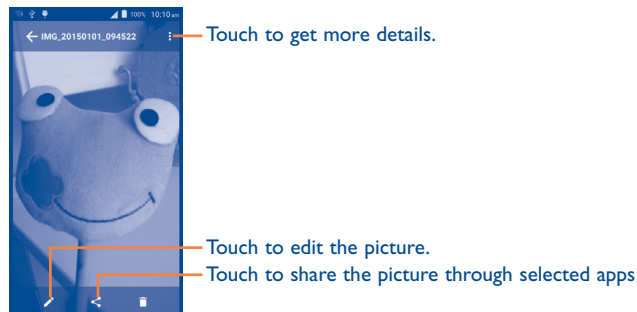
- Touch an album and all pictures or videos will display on the screen.
- Touch the picture/video directly to see or play it.
- Slide left/right to see previous or next pictures/videos.

Working with pictures

You can work with pictures by editing them, sharing them with friends, setting them as a contact photo or wallpaper, etc.




Locate the picture you want to work on, touch the picture from full-screen picture view. Slide the icon bar below left and right to select one, touch icon  to share the picture, touch  icon above and confirm **OK** to delete the picture.

Touch  from full-screen picture view, picture details will be available for your view.



Batch operation

The Gallery provides a multi-select function, so that you can work with pictures/videos in batches.

Open the main Gallery window or an album, touch  and select **Select album** to activate batch operation mode (you can also long press one album/picture), then touch albums/pictures you want to work on. Touch  and **Delete** to delete selected ones. Touch  to share selected ones.

8.3 YouTube

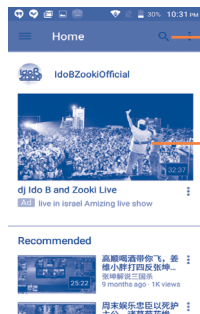
YouTube is an online video-sharing service where the user can download, share and see videos. It supports a streaming function that allows you to start watching videos almost as soon as they begin downloading from the Internet.

To open it, touch the Application tab from the Home screen, then touch **YouTube**.



As an online video service, your phone must have a network connection to open YouTube.

All videos in YouTube are grouped into several categories, like Most Popular, Most Discussed, Featured Videos, etc.



Touch to search for a video

Touch to play the video and to show more information

For details about YouTube features, visit the YouTube website: www.YouTube.com

8.3.1 Watch videos

Touch a video to play it. In the Playing screen, you can see information and video comments, and also browse links to related videos. You can also rate, share, label as favourite, create a new playlist, etc. from this screen.

To exit the video playing screen, touch the **Back** key to return to the video list.

8.4 Music

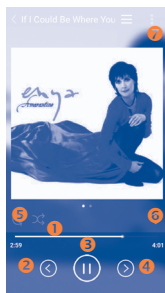
Using this menu, you can play music files stored on the microSD card or phone. Music files can be downloaded from a computer to the microSD card using a USB cable.

To play your music, touch the Application tab from the Home screen, then touch **Music**.

You will find the categories in which all songs are classified: **All, Favourites, Folders, Artists, Albums, etc.**

8.4.1 Playing music

Touch a song to play it.



- 1 Touch to play the current playlist in shuffle mode (tracks are played in random order).
- 2 Touch to skip to the previous track in the album, playlist, or shuffle.
- 3 Touch to pause/resume playback.
- 4 Touch to skip to the next track in the album, playlist, or shuffle.
- 5 Touch to select repeat mode: Repeating all songs, Repeating current song, or Repeat is off.
- 6 Touch to add to the favourite songs.
- 7 Touch to show the displayed songs.



While playing songs with Music, the operation of pause, play or skip is still available even if the screen is locked.

Adjust sound effects


Touch  and touch **Sound effects** from the playing screen to enable and adjust sound effects.

8.4.2 Working with playlists

Playlists allow you to conveniently organise all songs .

You can create a new playlist, add a song to the list, and delete or rename a playlist.

To create a playlist

Touch **Recent add** from the Playlists screen, touch  and then touch **Save as playlist**, enter the name and finally touch **Save**.

To delete a playlist

Long press a playlist to show the menu, then touch **Delete**.

To rename a playlist


Long press a playlist to show the menu, then touch **Rename**. When finished, touch **Save** to confirm.

9 Google Maps⁽¹⁾



9.1 Get My Location

9.1.1 Choose a data source to decide My Location

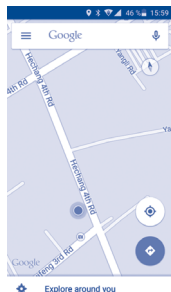
Touch  on the Quick settings bar to get to **Settings**, touch **Location**. Turn on the location to set the  Switch.

9.1.2 Open Google Maps and see My Location

Touch the Application tab from the Home screen, then touch **Maps**.

Touch the  icon on the map to see **My Location**.

The map will then centre on a blue dot. Your actual position is at the blue dot.



To move the map, drag the map with your finger.

To zoom in and out of a map, pinch or spread your fingers, or you can also zoom in by double touch a location on screen.

9.2 Search for a location

While seeing a map, touch the enter bar to activate the search function.

In the search box, enter an address, a city or a local business.

Touch the search icon to search, and in a while your search results will appear on the map as red dots. You can touch one to show a label.



Touch to show more information

9.3 Star a location

Just like bookmarking a web address on the Internet, you can star any position on the map for later use.

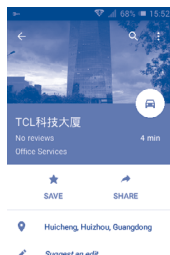
⁽¹⁾ It may vary depending on the app version of Maps.

9.3.1 How to star (or unstar) a location

Touch a location on a map.

Touch the address rectangle which then opens.

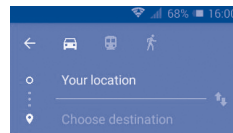
Touch the blue star to save the location. (Or touch a gold star to cancel the saving of that location.)





9.4 Get driving, public transportation or walking directions

9.4.1 Get suggested routes for your trip

Touch the  icon on the Maps screen.




- Touch the enter bar to edit your start point by entering an address or selecting a saved item.
- Do the same for your end point.
- To reverse directions, touch .
- Then select a transport mode: driving by car, using public transportation, or walking directions.

To get reverse directions for a route you've already made, simply open that route's directions window and touch . No need to enter your start point and end point again.

9.4.2 Preview suggested routes and decide on a route more preferable or feasible to you

You can preview each turn in your route in Navigation, Satellite, and other views.

- Touch a left or right arrow to preview the next or previous leg of your route.
- Touch the right arrow to open **Route preview**, touch  to open **All traffic, Satellite** or **Terrain**. Touch the **Back** key to return to the previous view.

When selecting a more preferable or feasible route, distance and time will be the two most important factors for your evaluation. Distance and estimated time will be displayed at the bottom of the directions screen.

9.4.3 Search for locations along your route

See "9.2 Search for a location" for detailed information.



9.5 Arrangement of Layers

Layers allow you to see locations and additional information overlaid on the map. You can add multiple layers or remove only certain layers so you control exactly what information you want visible on the map at one time.

9.5.1 To see multiple layers

Touch icon  from Maps screen. All available layers are listed (like Traffic, Satellite, etc), select one to see.

9.5.2 To clear the map

After you get directions or search on a map, you can clear the markers/ layers that have been drawn: touch  and **Settings**, select **Maps history**, then touch .

10 Others.....

10.1 File Manager.....



To open it, touch the Application tab from the Home screen, then touch **File Manager**.

File Manager works with both SD card and phone storage.

File Manager displays all data stored on both microSD card and phone storage, including applications, media files such as videos, pictures or audios you have captured; other data transferred via Bluetooth, USB cable, etc.

When you download an application from a PC to your microSD card, you can locate the application on File Manager; then touch it to install it in your phone.

File Manager allows you to perform and be really efficient with the following common operations: create a (sub) folder; open a folder/file, view, rename, copy, delete, play, share, etc.

10.2 Sound Recorder



To record a sound or voice memo, touch the Application tab from the Home screen, then touch **Sound Recorder**.

Sound Recorder allows you to record voice/sound for seconds/hours.

10.3 Radio

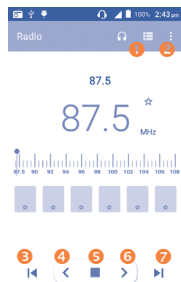


Your phone is equipped with a radio ⁽¹⁾. You can use the application as a traditional radio with saved channels or with parallel visual information related to the radio programme on the display if you tune to stations that offer a visual radio service.

To listen to the radio, touch the Application tab from the Home screen, then touch **Radio**.



To use it, you must plug in your headset, which works as an antenna connected with your phone.



- 1: Touch to open and see the saved channels list.
- 2: Touch to get more options.
- 3: Touch to go to previous saved channel.
- 4: Touch to decrease 0.1 MHz. Long press to search and go to the nearest lower frequency channel.
- 5: Touch to play/stop.
- 6: Touch to increase 0.1 MHz
- 7: Touch to go to next saved channel.

⁽¹⁾ The quality of the radio depends on the coverage of the radio station in that particular area.

Available options:

- **Auto search** Search for all available stations automatically.
- **Edit name** Edit the channel name.
- **Save channel** Save the current tuned station to the channels list.
- **Delete** Delete the channel.
- **Enter frequency** Enter the frequency manually.
- **Station info** Touch to see the station information.
- **Exit** Turn off the radio.

10.4 Other applications ⁽¹⁾

The previous applications in this section are preinstalled on your phone. To read a brief introduction of the preinstalled 3rd party applications, see the leaflet provided with the phone. You can also download thousands of 3rd party applications by going to Google Play Store on your phone.

⁽¹⁾ Application availability depends on country and operator.

Settings.....

Drag down the Notification panel and touch  to open **Settings**.

11.1 WIRELESS & NETWORKS

11.1.1 SIM management ⁽¹⁾

The SIM management option only exists under Dual SIM status.

SIM information

Touch to edit SIM name, enter phone number, set background colour.

Default SIM

Touch to select SIM for voice calls, messaging and data connections.

General settings

• **Roaming**

Touch to turn on/off data roaming and show roaming reminder.

11.1.2 Wi-Fi

While using Wi-Fi, you can surf the Internet the Internet without using your SIM card whenever you are in range of a wireless network. The only thing you have to do is to enter the **Wi-Fi** screen and configure an open point to connect your phone to the wireless network.

For detailed instructions on using Wi-Fi, see "**6.1.2 Wi-Fi**".

⁽¹⁾ 5015D only.


11.1.3 Bluetooth

Bluetooth allows your phone to exchange data (videos, images, music, etc.) within a small range with another Bluetooth supported device (phone, computer, printer, headset, car kit, etc.).

For more information on Bluetooth, see "**6.3 Connecting to Bluetooth devices**".

11.1.4 Data usage

To enable/disable mobile data, touch the  switch after selecting your mobile operator on the right of **OVERVIEW**.

By touching the switch  of **Set mobile data limit**, you can then drag the limit line and the warning line according to your preferred limits. Your mobile data connection will be disabled when the specified limit is reached. You can also choose a data usage cycle to see the statistics and related applications of your phone's data use.

Touch  and you can see more settings related to your data usage.



Data usage is measured by your phone, and your operator may count differently. Consider using a conservative limit.

11.1.5 Aeroplane mode

Through **More... \ Flight mode** you can simultaneously disable all wireless connections including Wi-Fi, Bluetooth and more.

You can also open Aeroplane mode by touching **Flight mode** on the Quick settings bar or in phone options when you press the **Power** key.

11.1.6 Tethering & portable hotspot

This function allows you to share your phone's mobile data connection via USB or as a portable Wi-Fi open point (See "**6.5 Sharing your phone's mobile data connection**").

11.1.7 VPN settings

A mobile virtual private network (mobile VPN or mVPN) provides mobile devices with open to network resources and software applications on their home network, when they connect via other wireless or wired networks. Mobile VPNs are used in environments where workers need to keep application sessions open at all times, throughout the working day, as the user connects via various wireless networks, encounters gaps in coverage, or suspends-and-resumes their device to preserve battery life. A conventional VPN can't survive such events because the network tunnel is disrupted, causing applications to disconnect, time out, fail, or even the computing device itself to crash.

For more information on VPN, see "**6.6 Connecting to virtual private networks**".

11.1.8 Mobile networks

- **Data roaming**

Touch to turn on/off data roaming.

- **Preferred network (type)**

Touch to view/edit/delete preferences.

- **Access Point Names**

You can select your preferred network with this menu.

- **Network operators**

You can select a network operator.

11.2 DEVICE

11.2.1 Gestures

Mark the checkbox or touch to enable the following gestures: **Turn over to mute**, **Turn over to reject**, **Turn over to activate**.

11.2.2 Sound & notification

Sound

Use the Sound settings to configure volume and ringtones for different events and environments.

Notification

The following options will be available under this menu: **When device is locked**, **App notifications**, **Notification access**.

11.2.3 Display

- **Wallpaper** Touch to set the wallpaper.
- **Brightness level** Touch to adjust the brightness of the screen.
- **Sleep** Touch to set the screen timeout.
- **Daydream** Touch to set the daydream.
- **Font size** Touch to set the font size.
- **When device is rotated** Select whether or not the screen rotates automatically.

11.2.4 Storage

Use these settings to manage your microSD card by monitoring the total and available space on your phone and your microSD card.



If a warning message comes up saying that phone memory is limited, you'll be asked to free up space by deleting some unwanted applications, downloaded files, etc.

11.2.5 Battery

In the battery screen you can see battery usage data since you last connected the phone to a power source. The screen also shows your battery status and how long it has been used since last charging. Touch one category to reveal its specific power consumption.

You can adjust power use by adjusting screen brightness or screen timeout in the Display screen.

11.2.6 Apps

You use the Applications settings to see details about the applications installed on your phone, to manage their data and force them to stop, and to set whether you want to permit installation of applications that you obtain from websites and emails.

11.3 PERSONAL

11.3.1 Location

Use your wireless network to pinpoint your location within an accuracy as close as several meters ("street level").

11.3.2 Security

Screen lock

- **None** Touch to disable screen unlock security.
- **Swipe** Touch to enable swipe unlock mode.
- **Pattern** Touch to unlock your phone's screen by drawing a pattern.
- **PIN** Touch to unlock your phone's screen with a numeric PIN.
- **Password** Touch to unlock your phone's screen with a password.


Owner info

Touch to input owner information which will display on the lock screen.

Encrypt phone

You can encrypt your accounts, settings, downloaded apps and their data, media and other files by touching **Encrypt phone**.

Find My Phone

Turn on the  switch to activate this function. It will protect your privacy in case of theft or loss.

Set up SIM card lock

Choose a SIM card you want to configure.

Touch the  switch of **Lock SIM card** to lock the SIM card with a PIN code.

Touch **Change SIM PIN** to change the PIN code.

Make passwords visible

Touch the  switch to show passwords as you type.

Device administrators


Touch to see or deactivate device administrators.

Unknown sources


Touch the  switch to permit installation of applications that you obtain from websites, emails, or other locations other than Google Play Store.

To protect your phone and personal data, download applications only from trusted sources, such as Google Play Store.

Auto-start management

Touch the  switch to allow or deny app auto-start during system boot up.

App permissions

Turn on the  switch to manage app permissions for security and privacy protection.

Data protection

Set your entry pattern to protect data.

Storage type

Software only.

Trusted credentials

Touch to display trusted CA certificates.

Install from Memory

Touch to install encrypted certificates from the microSD card.

Clear credentials

Touch to remove all credentials.

11.3.3 Accounts

Use these settings to add, remove, and manage your email and other supported accounts. You can also use them to control details of the ways applications send, receive, and synchronise data; if this is according to their own schedules; and whether all applications can synchronise user data automatically.

Add account

Touch to add an account for a selected app.

11.3.4 Language & input

Use the Language & input settings to select the language for the text on your phone and for configuring the onscreen keyboard. You can also configure voice input settings and the pointer speed.

Language

Touch to select the language and the region you want.

Spell checker

Mark the checkbox to enable the system to show suggested words.

Personal dictionary

Touch to open a list of the words you've added to the dictionary. Touch a word to edit or delete it. Touch the add button (+) to add a word.

Current keyboard

You can see the current keyboard and you can also change it.

Android keyboard

The Android keyboard settings apply to the onscreen keyboard that is included with your phone. The correction and capitalisation features affect only the English version of the keyboard.

Voice input

Touch to select voice input services, touch the Settings icon to show more choices for each service.

Text-to-speech output

- **Preferred engine**

Touch to choose a preferred text-to-speech engine, touch the Settings icon to show more choices for each engine.

- **Speech rate**

Touch to open a dialog where you can select how quickly you want the synthesizer to speak.

- **Listen to an example**


Touch to play a brief sample of the speech synthesizer, using your current settings.

Pointer speed

Touch to open a dialog where you can change the pointer speed, touch **OK** to confirm.

11.3.5 Backup & reset

Back up my data

Touch the  switch to back up your phone's settings and other application data to Google servers, with your Google account. If you replace your phone, the settings and data you've backed up are restored onto the new phone the first time you sign in with your Google account. If you mark this option, a wide variety of settings and data are backed up, including your Wi-Fi passwords, bookmarks, a list of the applications you've installed, the words you've added to the dictionary used by the onscreen keyboard, and most of the settings configured within the Settings application. If you unmark this option, settings are no longer backed up, and any existing backups are deleted from Google servers.

Backup account

Touch to back up your account.

Automatic restore

Mark the checkbox to restore your backed up settings or other data when you reinstall an application.

DRM reset

Touch to delete all DRM licenses.

Factory data reset

Phone reset will erase all of your personal data from the internal phone storage, including information about your Google account, any other accounts, your system and application settings, and any downloaded applications. Resetting the phone does not erase any system software updates you've downloaded or any files on your microSD card. If you reset the phone in this way, you're prompted to re-enter the same kind of information as when you first started Android.

When you are unable to power on your phone, there is another way to perform a factory data reset by using hardware keys. Press the **Volume up** key and the **Power** key simultaneously until the screen lights up.

11.4 SYSTEM

11.4.1 Date & time

Use date & time settings to customise your preferences for how date and time are displayed.

Automatic date & time

Touch to select Use network-provided time or Off.

Automatic time zone

Touch the  switch to use the network-provided time zone. Or set all values manually.

Set date

Touch to open a dialog where you can manually set the phone's date.

Set time

Touch to open a dialog where you can manually set the phone's time.

Select time zone

Touch to open a dialog where you can set the phone's time zone.

Use 24-hour format

Touch the  switch to display the time using 24-hour clock format.

Choose date format

Touch to open a dialog where you can select the format for displaying dates.

11.4.2 Scheduled power on & off

Touch to set the power on & off time for every day or specified days.

11.4.3 Accessibility

Accessibility settings can be used to configure any accessibility plug-ins you have installed on your phone. Such as Talkback, Captions, Magnification, Large text, etc.

11.4.4 Developer options

To open it, touch **Settings\About phone**, then touch **Build number** 7 times. Now **Developer options** is available.

The Development screen contains settings that are useful for developing Android applications. For full information, including documentation of the Android applications and development tools, see the Android developer website (<http://developer.android.com>).

11.4.5 Regulatory & safety

Touch to see information of the product model, manufacture name, IMEI number and some certification logos or text.

11.4.6 About phone

This contains information on items ranging from legal information, model number, firmware version, baseband version, kernel version, build number etc. related to the following:

System updates

Touch to check for system updates.

System updates (storage)

Touch to check for system updates (storage).

Status

This contains Battery status, Battery level, My phone number, Network, Signal strength, etc.

Legal information

Touch to see legal information.

You can learn more information about the phone such as its model number, firmware version, baseband version, kernel version and build number.

12 Making the most of your phone

You can download software upgrades for free from the website (www.alcatelonetouch.com).

12.1 Smart Suite

Smart Suite includes:

- **Contacts**

It allows you to back up contact entries so that you don't have to worry about losing, breaking, switching phones or changing service providers.

- **Messages**

It frees you from painstakingly inputting text on the keypads. All of your messages are easily accessible and well-organised.

- **Calendar**

It allows you to sync events freely between your phone and Outlook and create and edit new events from a PC.

- **Photos**

It allows you to easily import photos from a PC or the handset and organise them in different albums for better management.

- **Videos**

It allows you to insert video files from a PC for playback and then upload to a handset folder.

- **Music**

It allows you to quickly search for your favourites in a PC, manage the ultimate Library, and enjoy the easiest digital jukebox in your own mobile way.

- **Application**

It allows you to import downloaded mobile applications and have them installed on your handset upon synchronisation.

- **Backup**

It allows you to back up your contacts, messages, calendar, photos and applications, then import the backup files to your phone.

Supported Operating Systems

Windows XP/Vista/Windows 7/Windows 8.

12.2 Upgrade

You can use Mobile Upgrade tool or FOTA Upgrade tool to update your phone's software.

12.2.1 Mobile Upgrade




Download Mobile Upgrade from the ALCATEL ONETOUCH website (www.alcatelonetouch.com) and install it on your PC. Launch the tool and update your phone by following the step by step instructions (see the User Guide provided together with the tool). Your phone's software will now have the latest software.



All personal information will be permanently lost following the update process. We recommend you back up your personal data using Smart Suite before upgrading.

12.2.2 FOTA Upgrade

Using the FOTA Upgrade tool you can update your phone's software.

To access **System updates**, touch the Application tab from the Home screen, then select **System updates** or touch **Settings\About phone\System updates**. Touch  to check for updates, and the phone will search for the latest software. If you want to update the system, touch the button , after it is done touch  to complete the upgrade. Now your phone's software will be the latest version.

You should turn on data connection or Wi-Fi before searching for updates. Settings for auto-check frequency is also available once you restart the phone.

If you have chosen auto-check, when the system discovers the new version, dialog will pop up to choose download or ignore, the notification also will show in status bar.

13 Warranty

Your phone is warranted against any defect or malfunctioning which may occur in conditions of normal use during the warranty period of twelve (12) months ⁽¹⁾ from the date of purchase as shown on your original invoice.

Batteries ⁽²⁾ and accessories sold with your phone are also warranted against any defect which may occur during the first six (6) months ⁽¹⁾ from the date of purchase as shown on your original invoice.

In case of any defect of your phone which prevents you from normal use thereof, you must immediately inform your vendor and present your phone with your proof of purchase.

If the defect is confirmed, your phone or part thereof will be either replaced or repaired, as appropriate. Repaired phone and accessories are entitled to a one (1) month warranty for the same defect. Repair or replacement may be carried out using reconditioned components offering equivalent functionality.

This warranty covers the cost of parts and labor but excludes any other costs.

This warranty shall not apply to defects to your phone and/or accessory due to (without any limitation):

⁽¹⁾ The warranty period may vary depending on your country.

⁽²⁾ The life of a rechargeable mobile phone battery in terms of conversation time standby time, and total service life, will depend on the conditions of use and network configuration. Batteries being considered expendable supplies, the specifications state that you should obtain optimal performance for your phone during the first six months after purchase and for approximately 200 more recharges.

- 1) Non-compliance with the instructions for use or installation, or with technical and safety standards applicable in the geographical area where your phone is used,
- 2) Connection to any equipment not supplied or not recommended by TCL Communication Ltd.
- 3) Modification or repair performed by individuals not authorised by TCL Communication Ltd. or its affiliates or your vendor,
- 4) Modification, adjustment or alteration of software or hardware performed by individuals not authorised by TCL Communication Ltd.
- 5) Inclement weather, lightning, fire, humidity, infiltration of liquids or foods, chemical products, download of files, crash, high voltage, corrosion, oxidation...

Your phone will not be repaired in case labels or serial numbers (IMEI) have been removed or altered.

There are no express warranties, whether written, oral or implied, other than this printed limited warranty or the mandatory warranty provided by your country or jurisdiction.

In no event shall TCL Communication Ltd. or any of its affiliates be liable for indirect, incidental or consequential damages of any nature whatsoever, including but not limited commercial or financial loss or damage, loss of data or loss of image to the full extent those damages can be disclaimed by law.

Some countries/states do not allow the exclusion or limitation of indirect, incidental or consequential damages, or limitation of the duration of implied warranties, so the preceding limitations or exclusions may not apply to you.

4 Accessories

The latest generation of ALCATEL ONE TOUCH mobile phones offers a built-in handsfree feature that allows you to use the telephone from a distance, placed on a table for example. For those who prefer to keep their conversations confidential, an earpiece is also available known as the headset.


1. Charger
2. Battery
3. USB cable
4. Rock Headset



Only use your telephone with the ALCATEL ONE TOUCH batteries, chargers and accessories in your box.

15 Troubleshooting.....

Before contacting the service centre, you are advised to follow the instructions below:

- You are advised to fully charge () the battery for optimal operation.
- Avoid storing large amounts of data in your phone as this may affect its performance.
- Use **Factory data reset** and Mobile Upgrade tool to perform phone formatting or software upgrading (to reset factory data, hold down the **Power** key and the **Volume up** key at the same time under power off mode). ALL User phone data: contacts, photos, messages and files, downloaded applications will be lost permanently. It is strongly advised to fully back up the phone data and profile via Smart Suite before doing formatting and upgrading.

and carry out the following checks:

My phone can't be switched on or is frozen

- When the phone can't be switched on, charge for at least 20 minutes to ensure the minimum battery power needed, then try to switch on again.
- When the phone falls into a loop during power on-off animation and the user interface can't be accessed, press and hold the **Volume down** key to enter Safe Mode. This eliminates any abnormal OS booting issues caused by 3rd party APKs.
- If neither method is effective, please reset the phone using the **Power** key and the **Volume up** key (holding both together under power off mode) or upgrade software via Mobile Upgrade tool.

My phone has not responded for several minutes

- Restart your phone by pressing and holding the **Power** key.
- Remove the battery and re-insert it, then restart the phone
- If it still does not work, please use Factory data reset to reset the phone or FOTA/Mobile Upgrade to upgrade software.

My phone turns off by itself

- Check that your screen is locked when you are not using your phone, and make sure the **Power** key is not accidentally contacted while the screen is unlocked.
- Check the battery charge level.
- If it still does not work, please use Factory data reset to reset the phone or FOTA/Mobile Upgrade to upgrade software.

My phone can't charge properly

- Make sure you are using an ALCATEL ONETOUCH battery and the charger from the box.
- Make sure your battery is inserted properly and clean the battery contact if it's dirty. It must be inserted before plugging in the charger.
- Make sure that your battery is not completely discharged; if the battery power is empty for a long time, it may take around 20 minutes to display the battery charger indicator on the screen.
- Make sure charging is carried out under normal conditions (0°C to +40°C).
- When abroad, check that the voltage input is compatible.

My phone can't connect to a network or "No service" is displayed

- Try connecting in another location.
- Verify the network coverage with your operator.
- Check with your operator that your SIM card is valid.
- Try selecting the available network(s) manually
- Try connecting at a later time if the network is overloaded.

My phone can't connect to the Internet

- Check that the IMEI number (press *#06#) is the same as the one printed on your warranty card or box.
- Make sure that the internet access service of your SIM card is available.
- Check your phone's Internet connecting settings.
- Make sure you are in a place with network coverage.
- Try connecting at a later time or another location.

Invalid SIM card

- Make sure the SIM card has been correctly inserted (see "Inserting or removing the SIM card").

- Make sure the chip on your SIM card is not damaged or scratched.
- Make sure the service of your SIM card is available.

Unable to make outgoing calls

- Make sure you have dialled a valid number and have touched **Call**.
- For international calls, check the country and area codes.
- Make sure your phone is connected to a network, and the network is not overloaded or unavailable.
- Check your subscription status with your operator (credit, SIM card valid, etc.).
- Make sure you have not barred outgoing calls.
- Make sure that your phone is not in Aeroplane mode.

Unable to receive incoming calls

- Make sure your phone is switched on and connected to a network (check for overloaded or unavailable network).
- Check your subscription status with your operator (credit, SIM card valid, etc.).
- Make sure you have not forwarded incoming calls.
- Make sure that you have not barred certain calls.
- Make sure that your phone is not in Aeroplane mode.


The caller's name/number does not appear when a call is received

- Check that you have subscribed to this service with your operator.
- Your caller has concealed his/her name or number.

I can't find my contacts

- Make sure your SIM card is not broken.
- Make sure your SIM card is inserted properly.
- Import all contacts stored in SIM card to phone.

The sound quality of the calls is poor

- You can adjust the volume during a call by pressing the **Volume Up/Down** key.
- Check the network strength .
- Make sure that the receiver, connector or speaker on your phone is clean.

I am unable to use the features described in the manual

- Check with your operator to make sure that your subscription includes this service.

- Make sure this feature does not require an ALCATEL ONETOUCH accessory.

When I select a number from my contacts, the number can't be dialled

- Make sure that you have correctly recorded the number in your file.
- Make sure that you have selected the country prefix when calling a foreign country.

I am unable to add a contact in my contacts

- Make sure that your SIM card contacts are not full; delete some files or save the files in the phone contacts (i.e. your professional or personal directories).

My callers are unable to leave messages on my voicemail

- Contact your network operator to check service availability.

I can't access my voicemail

- Make sure your operator's voicemail number is correctly entered in "Voicemail number".
- Try later if the network is busy.

I am unable to send and receive MMS

- Check your phone memory availability as it might be full.
- Contact your network operator to check service availability and check MMS parameters.
- Verify the server centre number or your MMS profile with your operator.
- The server centre may be swamped, try again later.

SIM card PIN locked

- Contact your network operator to obtain the PUK code (Personal Unblocking Key).

I am unable to connect my phone to my computer

- Install Smart Suite.
- Check that your USB driver is installed properly.
- Open the Notification panel to check if the Smart Suite Agent has been activated.
- Check that you have marked the checkbox of USB debugging.

- Check that your computer meets the requirements for Smart Suite Installation.
- Make sure that you're using the right cable from the box.

I am unable to download new files

- Make sure there is sufficient phone memory for your download.
- Select the microSD card as the location to store downloaded files.
- Check your subscription status with your operator.

The phone can't be detected by others via Bluetooth

- Make sure that Bluetooth is turned on and your phone is visible to other users.
- Make sure that the two phones are within Bluetooth's detection range.

How to make your battery last longer

- Make sure you follow the complete charge time (minimum 2.5 hours).
- After a partial charge, the battery level indicator may not be exact. Wait for at least 20 minutes after removing the charger to obtain an exact indication.
- Adjust the brightness of screen as appropriate
- Extend the email auto-check interval for as long as possible.
- Update news and weather information on manual demand, or increase their auto-check interval.
- Exit background-running applications if they are not being used for a long time.
- Deactivate Bluetooth, Wi-Fi, or GPS when not in use.

The phone will become warm following prolonged calls, game playing, internet surfing or running other complex applications.

- This heating is a normal consequence of the CPU handling excessive data. Ending above actions will make your phone return to normal temperatures.

6 Specifications

Processor	MT6580M
Platform	Android™ 5.1
Memory	ROM: 4GB/8GB compatible RAM: 1GB
Dimensions (LxWxT)	140.7 x 71.4x 9.99mm
Weight	Around 162 grams with battery
Display	5-inch TFT-LED touchscreen with 854×480 FWVGA Capacity resolution
Network	GSM: Quad-band 850/900/1800/1900 MHz UMTS: Dual-band 900/2100 MHz (Band frequency and data speed are operator dependent.)
GPS	With GPS support
Connectivity	<ul style="list-style-type: none"> • Bluetooth V4.0 • Wi-Fi Direct 802.11 b/g/n • 3.5 mm audio jack • Micro-USB
Camera	<ul style="list-style-type: none"> • 2MP for front camera • 5MP AF for rear camera

Audio supported formats	WAV, MP3, MP2, AMR, MIDI, Vorbis, APE, AAC, AAC+, FLAC
Video supported formats	Encode: H.263, H.264, MPEG4 Decode: H.263, H.264, MPEG4, VP8, VP9, VCI
Battery ⁽¹⁾	<ul style="list-style-type: none"> • Rechargeable Lithium battery • Capacity: 1800mAh
Expansion Slot	microSD™ memory card (Availability of microSD card depends on market)
Special Features	<ul style="list-style-type: none"> • G-sensor

Note: Specifications are subject to change without prior notice.

ALCATEL is a trademark of Alcatel-Lucent
and is used under license by
TCL Communication Ltd.

© Copyright 2015 TCL Communication Ltd.
All rights reserved

TCL Communication Ltd. reserves
the right to alter material
or technical specification
without prior notice.

All "Signature" ringtones embedded in this phone have been composed, arranged and mixed by NU TROPIC (Amar Kabouche).

⁽¹⁾ The original battery has undergone rigorous safety inspections to meet qualification standards, the use of non-original batteries may be dangerous.